

Business scenarios for EDI communication in the gas market

Rules for EDI-based communication between:

- Distribution Company and Gas Supplier*
- Distribution Company and Transmission System Operator*

in relation to Change of Supplier, Relocation and Consumption Statements

Date: 1st June 2010
Status: Non-binding translation.
Version: 2.0

Table of contents

Change Log	3
1 General	6
1.1 Introduction	6
1.2 Documentation principle	6
1.3 The basis for the specification.....	8
1.4 Other communication.....	8
1.5 Definitions.....	9
1.6 The use of signs and decimals in communications	11
1.7 Handling of business transactions	12
1.8 Deadlines for acknowledgements of receipt	12
1.9 Codes used in EDI communications	12
2 Business scenarios	16
2.1 BS-201: Change of Supplier at Normal Notice.....	17
2.2 BS-202: End of supply	23
2.3 BS-203: Submission of base data.....	27
2.4 BS-204: Change of Supplier at Short Notice	30
2.5 BS-205: Consumption statement for a Non-Daily Read Metering Site	36
2.6 BS-206: Consumption statement for a Daily Read Metering Site	40
2.7 BS-207: Relocation (vacating consumer) notified to the Distribution Company	43
2.8 BS-208: Relocation (incoming consumer) notified to the Distribution Company	48
2.9 BS-209: Relocation (incoming consumer) notified to the Gas Supplier	54
2.10 BS-210: Disconnection and reconnection of a Metering Site	60
2.11 BS-212: Change of meter-reading method.....	65
2.12 BS-213: Submission of market share values	69
2.13 BS-214: Submission of calorific values	72
2.14 BS-215: Adjusted residual consumption.....	76
2.15 BS-216: Aggregated gas consumption.....	78
2.16 BS-217: Reconciliation statement.....	87
3 Error handling.....	90
4 Fallback procedures.....	91
4.1 Form for the change of Gas Supplier	93
4.2 Instructions.....	94
5 Approval of EDI systems	95

Change Log

The change log contains any alteration carried out since the previous version or release was published. As a rule of thumb, a change of version contains significant changes to structure and/or syntax, whereas a change of release contains minor adjustments.

15 February 2009

Version 1.2		
Chapter	Process	Change
1.9	-	Added new product code, 3008, calorific monthly values in kWh \varnothing / Nm ³ , Validated average consumption
2.1	BS-201	Figure 1 is adjusted so that transaction BT-004 – submission of base data (E07) – is included as a separate transaction within BT-001.
2.1.6	BS-201	BT-004 is added to the table in accordance with the above change.
2.4	BS-204	Figure 4 is adjusted so that submission of base data (E07) is no longer a part of BT-001, and instead the figure is extended with a separate BT-004.
2.4.6	BS-204	BT-004 is added to the table in accordance with the change in the above mentioned process.
2.9	BS-209	Figure 9 is adjusted so that submission of base data (E07) is no longer a part of BT-001, and instead the figure is extended with a separate BT-004.
2.9.6	BS-209	BT-004 is added to the table in accordance with the change in the above mentioned process.
2.12.5	BS-213	Consumer portfolio number has been changed from GLN to GSRN.
2.13.6	BS-214	Added new product code, 3008, calorific monthly values in kWh \varnothing / Nm ³ , Validated average consumption
2.15.6	BS-216	Consumer portfolio number has been changed from GLN to GSRN.
2.16.5	BS-217	Consumer portfolio number has been changed from GLN to GSRN.

1st October 2009

Version 1.3		
Chapter	Process	Change
1.2	-	Added a paragraph specifying that this document goes before any other documentation for the gas market in case of incongruence.
1.5	-	Changed the definition of Business Days.
1.8	-	Added that the sender is allowed to contact the receiver after 20 minutes to get an acknowledgement of

		receipt.
1.8	-	Emphasized that it is a <i>negative</i> CONTRL that must be submitted no later than 5 minutes upon reception.
2.13.3	BS-214	Added step 4 which specifies that the Distribution Company acknowledges receipt.
2.15.5	BS-216	Clarifies that deadlines for submission of daily read consumption data are when submitting to the transmission systems operator.

1st June 2010

Version 2.0		
Chapter	Process	Change
1.5		Added difinitions related to Bio Natural Gas (BNG)
1.9	-	Added new product code (3009) including specification. Added BNG transition point for the product codes 3060, 3061, 3062, and 3063.
2.13.1	BS-214	Added paragraph about the assessment of gas and submission of Non-validated calorific values. Adjusted figure so that it also contains the daily submission of Non-validated calorific values.
2.13.2	BS-214	Added the following sentence: "At the end of the calendar day, the transmission system operator assesses the Non-validated calorific value of the natural gas for each M/R station."
2.13.3	BS-214	Adds 2.a and 2.b which specifies the difference between the submission of daily Non-validated and daily and monthly Validated calorific values.
2.13.5	BS-214	Added deadline for submitting daily Non-validated calorific values.
2.13.6	BS-214	Added new product code (3009) including specification.
2.15	BS-216	Figure 15, proces flow diagram for BS-216 has been changed so that it also includes the role Bio Natural Gas Producer, including a transaction (BT-008) between the Distribution Company and the Bio Natural Gas Producer.
2.15.1	BS-216	Added that the process also entails Bio Natural Gas Producers, and noted that there are no requirements for Bio Natural Gas Producers with regards to sending confirmations (APERAK or CONTROL).
2.15.3	BS-216	Added an additional point (4) which describes the submission of injection values from the Distribution Company to the Bio Natural Gas Producer and Transmission System Operator.

2.15.4	BS-216	<p>Added the sentence: "For metering sites measuring the injection of Bio Natural Gas, the Metering Site administrator must also submit the injection values in kWhø to the Transmission System Operator and to the Bio Natural Gas Producer."</p> <p>Added the sentence: "If dealing with injection of Bio Natural Gas, the measured gas flow must be negative within the EDI message. The Distribution Company receiving the gas (and measuring it) must add the gas volume to its total M/R injection."</p>
2.15.5	BS-216	<p>Deadline for submission of Settlement of gas flow changed from 08:00 to 08:30.</p> <p>Added deadline for submission of injection values.</p>
2.15.6	BS-216	<p>Added paragraph about "Injection of Bio Natural Gas (with negative sign)."</p>
6 (Appendix 1)	-	<p>Appendix 1 is removed, please refer to the deadlines described for each process.</p>

1 General

1.1 Introduction

This specification describes the EDI model that is to be used when handling, for instance, a change of Gas Supplier on the Danish gas market. It must be used by all players that have a role in this communication. The specification is based on the North European ebIX standard and has been adapted for the Danish market model and the existing Danish EDI communication on the gas market.

1.2 Documentation principle

The documentation has been structured so as to simplify the mapping and documentation of new scenarios as well as changing existing ones. Readers with a business background need not focus on technical details and technicians not on business aspects.

The documentation is available in Danish and English and is divided into five groups:

- *Business scenarios for EDI communication in the gas market*
- *Danish Business Transactions for the Electricity and Gas Market*
- *Danish Message Implementation Guides*
- *EDI communication (Regulation F)*
- *Danish product code list*

Should incongruence occur between the above mentioned documentation, at any time *Business scenarios for EDI communication in the gas market* will be the primary reference. Incongruences may especially occur between this document and the transaction examples given in *Danish Business Transactions for the Electricity and Gas Market*.

Business scenarios for EDI communication in the gas market applies to the gas market and provides a description of business rules and procedures for the practical handling of change of supplier and other business scenarios. The target group consists of superusers and others active in the Danish gas sector. The document has been prepared in the form of so-called sequence diagrams providing a general illustration of the data exchanged between the individual players and the points in time of the exchange. The technical content of the data exchanges is not specified in any detail, and reference is only made to relevant parts of *Danish Business Transactions for the Electricity and Gas Market*. As a consequence, the need for new or adjusted business scenarios is more readily identified and can be more eas-

ily implemented, ie market players will be less restricted by technical obstacles. Documentation can be found on www.gasmarked.dk .

Danish Business Transactions for the Electricity and Gas Market applies to the electricity and gas markets, specifying the use in Denmark of the European ebIX model. This part of the documentation, which is targetted at IT suppliers, specifies how the IT systems must operate in relation to data exchange in the market. The documentation is presented in the form of activity diagrams for the IT system handling of the individual EDI messages and pertaining data models for the individual situations. Every business transaction is autonomous and independent of other business transactions. They are used as 'building blocks' in the business scenarios. A business transaction developed for a given business scenario can be used again in another business scenario. The relevant documentation can be found on www.gasmarked.dk .

Danish Message Implementation Guide applies to the electricity and gas markets and describes the use in Denmark of a given EDIFACT message, eg UTILMD. The basis for the description is the European ebIX Message Implementation Guide, the Danish version of which shows the concrete Danish definition of the attributes applied and the values and codes allowed. The documentation can be found on www.gasmarked.dk .

EDI communication (Regulation F) applies to the electricity and gas markets and contains a specification of all documentation common to exchange of EDI messages, ie addressing, opening hours, communication protocol and error handling at the individual levels. The documentation applies to all exchanges of data via EDI communication, for instance when metered data are implemented in a revised form and in the case of change of supplier in the electricity or gas sector.

The documentation is used as supplement to ebIX' *Common rules and recommendations*, available on www.ebix.org, and therefore contains primarily the Danish rules not included in the ebIX recommendation. The specification is maintained by the Danish ebIX group. Approval is granted by the organisation(s) responsible for the business rules, eg TSO responsibility and projects for the implementation of new market rules. The documentation can be found on www.gasmarked.dk .

The ***Danish product code list*** applies to the electricity and gas markets, containing all the common Danish product codes. The product code list can be found on www.energinet.dk .

1.3 The basis for the specification

This EDI specification, which has been prepared by Energinet.dk and the companies distributing natural gas in Denmark, is based on Rules for Gas Distribution, which are available on www.gasmarked.dk.

In respect of data exchange, the specification is based on the following documents, which can be accessed or downloaded on www.ebix.org :

- *ebIX model for customer switching*, version 0.8 A of 25 September 2003.
- *Implementation guide for Utility Base data Message (UTILMD)*, version 5.0 B.
- *Implementation guide for metered services consumption report (MSCONS)*, version 2.4D.
- *Implementation guide for Application error and acknowledgement message (APERAK)*, version 2.4B.
- *ebIX code list: www.ebix.org*

1.4 Other communication

Other communication is communication by letter, telefax or e-mail. The Distribution Company, the Gas Supplier and the transmission system operator must use other communication in the following cases:

- In situations where EDI communication is not used. It is specified for each business scenario when other communication is or can be used. All deadlines applying to the use of other communication are listed in appendix 1.
- In emergency situations where it is technically impossible to use EDI communication. For most business scenarios, emergency procedures have been established that must be complied with by the Distribution Company, the Gas Supplier and the transmission system operator. These emergency procedures are described in section 4, which also contains a form to be completed in the event of change of supplier.
- In case the Gas Supplier has chosen to defer the use of EDI communication for up to 18 months after one of the Gas Supplier's consumer portfolios has been given the status "active". In relation to the Distribution Company, the Gas Supplier must, however, follow the emergency procedures described in section 4. In its messages to the Gas Supplier, the Distribution Company will always use EDI communication.

1.5 Definitions

The following words define the business terms that are used in the gas sector and in this guide.

Business Day

Business Days are Monday through Friday with the exception of holidays as specified in the Business Day calendar on Energinet.dk's web site (www.energinet.dk). The definition is the same for both the electricity and gas market.

Bio Natural Gas (BNG)

Bio Natural Gas is bio gas which has been upgraded with a view to fulfil the quality specifications for Natural Gas in the Danish Gas System. BNG may physically be transported in the Danish Natural Gas System through delivery to the Distribution Network.

BNG Transition Point

A **BNG Transition Point** is a virtual point facilitating delivery of BNG into the Danish Natural Gas System. The BNG Transition Point is nonconnected to the Transmission system by relating to a single BNG Metering Point. Each BNG Transition Point will be assigned a GLN (Global Location Number) by the transmission system operator.

Bio Natural Gas Producer

The **Bio Natural Gas Producer** is any natural or legal person who has the responsibility for running and administering the bio natural gas plant and who upgrades the biogas to Bio Natural Gas.

Distribution Company

Distribution Company is any natural or legal person who is authorised to carry out the distribution of natural gas.

Market Share Value of the Distribution Area

The Market Share Value of the Distribution Area, which is the sum of the Market Share Value of the Metering Site of all the Non-Daily Read Metering Sites in a distribution area.

Relocation

Relocation is the situation in which the consumer vacates a specific Metering Site and/or a new consumer moves to the same Metering Site.

Public Supply Obligation Company

Public Supply Obligation Company is a Gas Supplier who in accordance with the Danish Natural Gas Supply Act is responsible for supplying gas to consumers and potential consumers in areas designated for natural gas supply in accordance with the Danish Heat Supply Act and to other consumers who are or will be connected to the distribution system.

Market Share Value of the Gas Supplier

The Market Share Value of the Gas Supplier which is the sum of the Market Share Value of the Metering Site for the Non-Daily Read Metering Sites which the Gas Supplier supplies in a distribution area;

GLN

GLN (Global Location Number) is the number assigned to each BNG Transition Point by the transmission company for identification of the point.

GSRN

GSRN (Global Service Relation Number) is the number that each Metering Site (metering site number) and each consumer portfolio (consumer portfolio number) must have to ensure identification of the Metering Site or the consumer portfolio.

Gas Supplier

Gas Supplier is any natural or legal person who supplies consumers with natural gas.

Change of Supplier at Short Notice

Change of Supplier at Short Notice is a change of supplier at a notice of down to (3) Business Days before the gas day when the change of supplier is to become effective.

Change of Supplier at Normal Notice

Change of Supplier at Normal Notice is a change of supplier at a notice of a maximum of two (2) gas months and a minimum of one (1) gas month before the gas day when the change of supplier is to become effective.

Metering Site

Metering Site is the actual point at which the gas meter is physically located and to which the natural gas is supplied to the consumer from the distribution system (place of supply).

Market Share Value of the Metering Site (expected annual consumption)

The Market Share Value of the Metering Site, which is the expected annual consumption of natural gas for one Non-Daily Read Metering Site as specified by the Distribution Company.

Non-Daily Read Metering Site

Non-Daily Read Metering Site is a Metering Site which is settled between the players in accordance with the regulations for non-daily metered consumption.

Appointed Date (or Date Appointed)

Appointed Date is one of the following dates in connection with change of supplier or Relocation:

1. The date on which a Gas Supplier takes over the supply to a Metering Site
2. The date on which a Gas Supplier discontinues the supply to a Metering Site
3. In connection with Relocation the Appointed Date is one of the following dates:
 - in case of the vacating consumer's notification of Relocation, the date when the agreement with the Distribution Company expires as a result of the consumer's termination of the agreement; the conditions which determine when the agreement expires are laid down in the distribution conditions;
 - in case of the incoming consumer's notification of Relocation: the date when the agreement with the Distribution Company takes effect as a result of the consumer's notice of commencement of residence; or
 - in case of a notification of Relocation by the incoming consumer's Gas Supplier, the date when the change of Gas Supplier takes effect in accordance with item 7.2.3. The Appointed Date must be the same date on which the incoming consumer takes over the Metering Site.

Daily Read Metering Site

Daily Read Metering Site is a Metering Site which is settled between the players in accordance with the regulations for daily read consumption.

Validated

Validated is when consumption data have been finally Validated and adjusted, if necessary, by the Distribution Company in regard to settlement.

Non-Validated

Non-Validated is when consumption data are preliminary and have not been finally Validated by the Distribution Company.

1.6 The use of signs and decimals in communications

All values communicated shall be positive unless otherwise indicated in the individual business scenarios.

Non-daily read consumption data values (MSCONS 7) shall be given with a maximum of three decimals. All other values shall be given in whole numbers (including the consumption reported in a base data message (UTILMD E07)).

1.7 Handling of business transactions

All players must be able to use the latest version of a given business transaction used in the business scenarios described in this document.

1.8 Deadlines for acknowledgements of receipt

The deadlines for sending acknowledgements of receipt is not later than two hours from receipt of a message unless otherwise indicated in the relevant business scenario. After 20 minutes the sender is allowed to contact the receiver to ask for an acknowledgement of receipt. A *negative* CONTRL acknowledgement of receipt must be sent not later than five minutes from receipt of a message. For further information on the use of APERAK and CONTRL, see Appendix Report 2 in EDI communication (Regulation F).

1.9 Codes used in EDI communications

In the EDI messages used in the business scenarios, various codes are applied. They are:

- EDIFACT codes consisting of max. three characters
- ebIX codes, all beginning with 'E'
- Danish function codes, all beginning with 'Z'
- Four-digit Danish product codes

The following codes are used in this guide:

Message name (all)

- 7 Time series report (MSCONS)
- 392 Change of supplier (UTILMD)
- 406 End of supply (UTILMD)
- 414 Confirmation of start of supply (UTILMD)
- 432 End of supply (UTILMD)
- E07 Base data (UTILMD)
- Z01 Report on Non-Daily Read Metering Site (MSCONS)

Message function (all)

- 5 Replace (MSCONS)
- 9 Original (MSCONS)
- 34 Received, approval given at transaction level (APERAK)

Reason for transaction (UTILMD)

- E01 Relocation

- E03 Change of Supplier at Normal Notice
- E05 Cancellation of previous transaction
- E20 End of supply
- E32 Update of base data as agreed
- E40 Change of Supplier at Short Notice
- Z02 Change of Metering-Site address
- Z03 Change of next scheduled date(s) of reading
- Z04 Change of estimated annual consumption
- Z05 Change of consumer party name(s)
- Z06 Change of physical status of Metering Site
- Z07 Change of meter-reading method

Status (UTILMD)

- 39 Transaction approved
- 41 Transaction rejected

Rejection codes (UTILMD)

- E10 Metering Site not identifiable
- E16 Unauthorised Gas Supplier
- E17 Requested Appointed Date not within deadline
- E22 Metering Site blocked for change
- E59 Already existing relation

Meter-reading method (UTILMD)

- E01 Non-daily reading
- E02 Daily reading

Physical status of Metering Site (UTILMD)

- E22 Metering Site connected
- E23 Metering Site disconnected

Product code (MSCONS)

- 1082: Adjusted residual consumption in kWh₀
- 3001: Total consumption in kWh₀, Non-Validated
- 3002: Total consumption in kWh₀, Validated
- 3003: Total consumption in Nm³, Non-Validated
- 3004: Total consumption in Nm³, Validated
- 3005: Total consumption in m³, Non-Validated
- 3006: Total consumption in m³, Validated
- 3007: Calorific daily values in kWh₀/ Nm³, Validated consumption
- 3008: Calorific monthly values in kWh₀/ Nm³, Validated average consumption
- 3009: Calorific daily values in kWh₀/ Nm³, Non-Validated consumption
- 3011: Reconciliation statement in kWh₀

- 3012: Periodised consumption in kWh_ø
- 3013: Market share value of the distribution area in kWh_ø
- 3014: Market Share Value of the Gas Supplier in kWh_ø

- 3020: Residual consumption in kWh_ø, Non-Validated consumption
- 3021: Residual consumption in kWh_ø, Validated consumption
- 3022: Residual consumption in kWh_ø, 1st correction
- 3023: Residual consumption in kWh_ø, 2nd correction

- 3030: Consumption per M/R station in kWh_ø, Non-Validated consumption
- 3031: Consumption per M/R station in kWh_ø, Validated consumption
- 3032: Consumption per M/R station in kWh_ø, 1st correction
- 3033: Consumption per M/R station in kWh_ø, 2nd correction

- 3040: Daily read consumption per Gas Supplier (aggregated) in kWh_ø, Non-Validated consumption
- 3041: Daily read consumption per Gas Supplier (aggregated) in kWh_ø Validated consumption
- 3042: Daily read consumption per Gas Supplier (aggregated) in kWh_ø 1st correction
- 3043: Daily read consumption per Gas Supplier (aggregated) in kWh_ø 2nd correction

- 3050: Distributed residual consumption in kWh_ø Non-Validated consumption
- 3051: Distributed residual consumption in kWh_ø Validated consumption
- 3052: Distributed residual consumption in kWh_ø 1st correction
- 3053: Distributed residual consumption in kWh_ø 2nd correction

- 3060: Consumption per Metering Site, injection per M/R station or BNG Transition Point in the case of gas flow settlement in kWh_ø, Non-Validated consumption
- 3061: Consumption per Metering Site, injection per M/R station or BNG Transition Point in the case of gas flow settlement in kWh_ø, Validated consumption
- 3062: Consumption per Metering Site, injection per M/R station or BNG Transition Point in the case of gas flow settlement in kWh_ø, 1st correction
- 3063: Consumption per Metering Site, injection per M/R station or BNG Transition Point in the case of gas flow settlement in kWh_ø, 2nd correction

Code for reason for reading (MSCONS)

- 1 Periodical reading
- 2 Change of supplier
- 3 Non-periodical reading
- 9 Reading required for change of reading method

Quantity status (MSCONS)

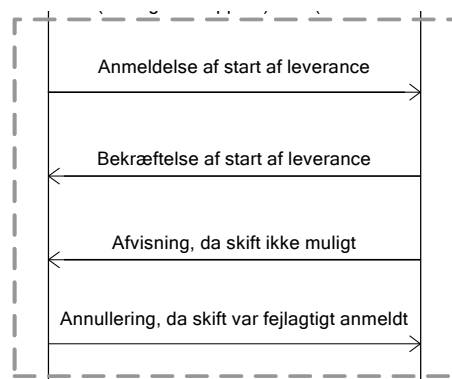
- 31 Estimated yearly consumption
- 99 Final value, estimated
- 136 Final value, metered
- Z01 Final value, manually corrected

Error codes (APERAK)

- 42 Error in a data element
- 100 The transaction is approved

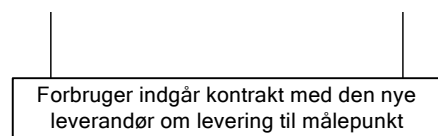
2 Business scenarios

This section describes the business scenarios by means of so-called sequential diagrams and pertaining descriptions of the business procedures and rules.



Translation:

Notification of start of supply
 Confirmation of start of supply
 Rejected, change not possible
 Cancelled, notification of change incorrect



Translation:

The consumer concludes a contract with the new supplier on the supply of a Metering Site

An area within the diagrams, as shown on the left, represents a transaction and the messages involved illustrated by horizontal arrows between the players.

The area is identified by the unique denomination of the transaction, eg BT-001: Start of the supply.

A white bar indicates a manual procedure/activity, which can either take place between individual players or within a player's company. By manual is understood communication not occurring by EDI communication, ie letter, e-mail or phone.

2.1 BS-201: Change of Supplier at Normal Notice

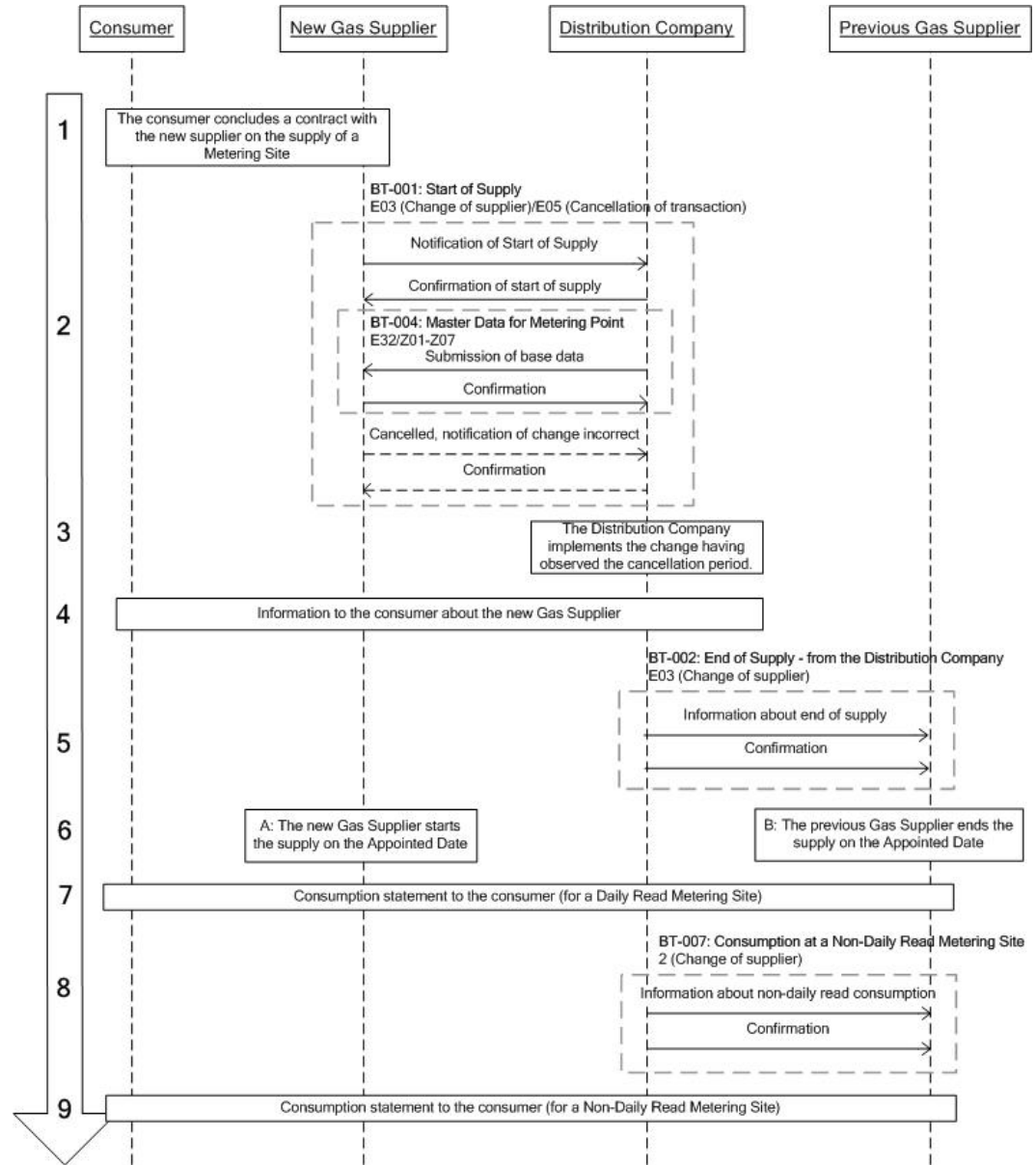


Figure 1: BS-201: Change of Supplier at Normal Notice

2.1.1 General

A request for Change of Supplier at Normal Notice must always be communicated to the Distribution Company by the supplier as the consumer is not entitled to do so.

This business scenario consists of three transactions:

- Notification of start of supply
- Notification to the previous Gas Supplier of end of supply
- Notification to the previous Gas Supplier of the consumption metered at the Non-Daily Read Metering Site.

In situations where EDI communication is not possible, the form intended for change of Gas Supplier shown in section 4.1 is to be used.

2.1.2 Start condition for Change of Supplier at Normal Notice

Prior to the Gas Supplier's submission of an electronic notification of Change of Supplier at Normal Notice in respect of a given Metering Site, a contract must be concluded with the consumer on supply of natural gas to the relevant Metering Site as from a given Appointed Date.

2.1.3 Stages in the scenario of Change of Supplier at Normal Notice

1. The consumer enters into a contract with the new Gas Supplier on the supply of natural gas to a given Metering Site.
2. Following the conclusion of the contract, the new Gas Supplier communicates the Change of Supplier at Normal Notice to the Distribution Company. If the Distribution Company rejects the communication, it must specify one of the following reasons:
 - Metering Site not identifiable
 - Unauthorised Gas Supplier
 - Requested Appointed Date not within deadline
 - Metering Site blocked for change, eg because
 - a change on the Appointed Date has already been communicated
 - Already existing relation

Note that, in case the Distribution Company receives notification from two Gas Suppliers in respect of the same Appointed Date, the supplier whose communication arrives first will be awarded the supply. Consequently, all communications received after the one first approved are rejected.

Having approved a request for Change of Supplier at Normal Notice, the Distribution Company will submit base data relating to the Metering Site via a separate message, enabling the new Gas Supplier to check the identity of the consumer.

In case no street code relating to the installation address exists, and it therefore does not appear from the base data message, the street code will be submitted in a subsequent message.

It is the new Gas Supplier's responsibility - on the basis of the consumer party name and the address of the Metering Site - to manually check that the Change of Supplier at Normal Notice has been carried out for the right Metering Site and the right consumer. If this is not so, the new Gas Supplier must cancel the change of supplier in compliance with the appropriate cancellation period.

If the new Gas Supplier cancels the change, the business scenario ends here. Otherwise, it will be resumed on expiry of the cancellation period.

3. Having accepted the change of supplier, the Distribution Company must implement the change before the applicable deadline.
4. On expiry of the deadline for cancellation by the new Gas Supplier, the Distribution Company implements the Change of Supplier at Normal Notice, entering it into the customer system, and informs the consumer accordingly. Cancellation of the Change of Supplier at Normal Notice is now no longer possible.
5. The Distribution Company notifies the previous Gas Supplier of the end of supply. If the recipient is not the Gas Supplier of the Metering Site, the notification is rejected, and the Distribution Company must contact the previous Gas Supplier in another way.
6. A: The new Gas Supplier starts the supply of the approved Metering Site on the Appointed Date.

B: The previous Gas Supplier stops the supply on the Date Appointed for the change of supplier.
7. When the necessary basis for settlement in respect of a Daily Read Metering Site is available, the previous Gas Supplier sends the consumption statement to the consumer pursuant to the applicable rules.

If the previous Gas Supplier supplies gas to a Daily Read Metering Site, the business scenario ends here.

8. In the case of a Non-Daily Read Metering Site, the Distribution Company communicates consumption data up to the Appointed Date to the previous Gas Supplier.
9. In the case of a Non-Daily Read Metering Site, the Distribution Company and the previous Gas Supplier assess the consumption of gas and gas transport and send a consumption statement to the consumer pursuant to the applicable rules once the necessary basis for settlement is available.

In the case of a Non-Daily Read Metering Site, the consumption statement may result in a new value in respect of estimated annual consumption. In this case, the Distribution Company submits base data for the Metering Site to the new Gas Supplier subject to business scenario BS-203: Submission of base data.

2.1.4 Deadlines for Change of Supplier at Normal Notice

Process	Deadline	Explanation
Request for Change of Supplier at Normal Notice	The first day of a month giving 1 - 2 months' notice.	Notice of request for a Change of Supplier at Normal Notice before the Appointed Date. A normal change can take place at 06:00 local time on the first day of a month.
Submission of base data	Not later than 1 Business Day after acceptance of request for start of supply.	Submission of base data to the new Gas Supplier following confirmation of start of supply.
Cancellation of request	Not later than 5 Business Days after receipt of request.	The new Gas Supplier's cancellation following the Distribution Company's receipt of request for a normal change of supplier.
Notification of end of supply	As soon as possible after expiry of cancellation deadline.	The Distribution Company gives notification of end of supply to the previous Gas Supplier.
Submission of consumption data for a Non-Daily Read Metering Site	Not later than 20 Business Days after the Date Appointed for the change of supplier.	The Distribution Company submits consumption data for a Non-Daily Read Metering Site to the previous Gas Supplier.

Figure 1. Deadlines in the case of a Change of Supplier at Normal Notice

2.1.5 Data content for Change of Supplier at Normal Notice

The significant data fields involved in the individual data flows are mentioned below. By significant is meant crucial for a professional handling of the scenario.

Notification of start of supply

- Metering Site id
- Start date of supply
- Supplier id

Confirmation of start of supply - approval

- Metering Site id
- Start date of supply
- Supplier id
- Consumer party name and second consumer party name, if appropriate

Confirmation of start of supply - rejection

- Metering Site id
- Reason for rejection

Submission of base data

- Cause of transaction:
 - E03 Change of Supplier at Normal Notice
- Metering Site id
- Metering Site address (coded address)
- Reading method at Metering Site
- Physical status of Metering Site
- Validity start date
- Start date of supply
- Supplier id
- Date of reading
- Estimated annual consumption
- Consumer party name and second consumer party name, if appropriate

Information on end of supply

- Metering Site id
- End date of supply

Information on non-daily read consumption

- Metering Site id
- Quantity time interval
- Product code
 - 3002: Total consumption in kWh₀
 - 3004: Total consumption in Nm³ (if conversion equipment available)
 - 3006: Total consumption in m³ (if conversion equipment NOT available)
- Quantity (showing up to three decimals)
- Code for reason for reading
- Quantity status
 - 99: Final value, estimated
 - 136: Final value, metered
 - Z01: Manually corrected value

2.1.6 Identification of scenario and transactions

The unambiguous denominations of the business scenario and the transactions involved are given in the chart below.

BS ID	BS-201
BS name	Change of supplier
BS version	2
BS release	0
BS date	1st June 2010
EDI transactions:	
BT ID	DK-BT-001
BT name	Start of supply
BT version	3
BT ID	DK-BT-004
BT name	Master Data for Metering Point
BT version	3
BT ID	DK-BT-002
BT name	End of supply - from MPA
BT version	3
BT ID	DK-BT-007
BT name	Consumption for Metering Site, profiled
BT version	3

2.2 BS-202: End of supply

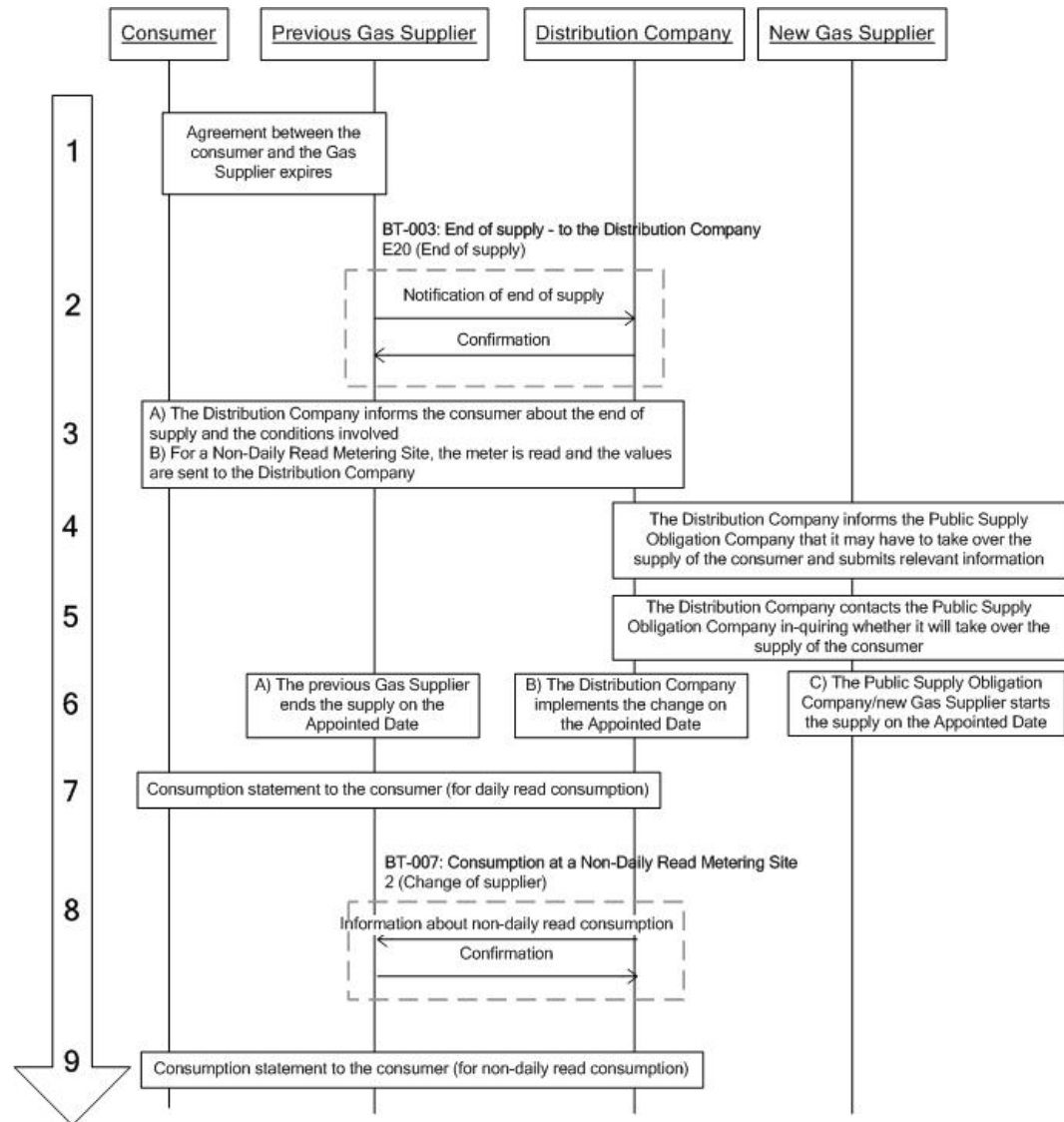


Figure 2: BS-202: End of supply

2.2.1 General

A Gas Supplier remains responsible for a given Metering Site until a new Gas Supplier takes over the responsibility (business scenario BS-201) or, giving the notice applicable at the relevant time, the Gas Supplier informs the Distribution Company that supply of the Metering Site is no longer required. In the latter case, the messages are to be sent pursuant to the business scenario described in this section.

This business scenario consists of two transactions:

- End of supply (to the Distribution Company)
- Consumption data relating to a Non-Daily Read Metering Site

2.2.2 Start condition for end of supply

The Gas Supplier is aware that the supply will stop at a given appointed timepoint. This typically occurs if the consumer does not wish to prolong his contract or as a result of breach of contract.

2.2.3 Stages in the end-of-supply scenario

1. The contract concluded by the consumer and the Gas Supplier expires, and consequently the supply stops on the given Appointed Date.
2. The Gas Supplier submits a notification of end of supply to the Distribution Company, stating the Metering Site and the given Appointed Date. If the Distribution Company rejects the notification, it must give one of the following reasons:
 - Metering Site not identifiable.
 - Unauthorised Gas Supplier (if the Gas Supplier is not the appropriate supplier of the Metering Site).
 - Requested Appointed Date not within the deadline.

In case of rejection, the Gas Supplier either submits a corrected notification or contacts the Distribution Company by other means.

3. A) Once the Distribution Company has accepted the end of supply, it must inform the consumer:
 - That the Metering Site has no Gas Supplier as from the end date of supply, and the consumer must ensure that a new Gas Supplier takes over the supply of the Metering Site.
 - That the Public Supply Obligation Company will take over the supply of the Metering Site unless the consumer finds a new Gas Supplier, declines or does not meet the requirements. If a new Gas Supplier for the Metering Site is not found, the supply will be discontinued.

B) In the case of a Non-Daily Read Metering Site, a meter reading is performed, and the registered values are sent to the Distribution Company.
4. The Distribution Company submits relevant information about the consumer to the Public Supply Obligation Company, which performs a detailed check of the consumer.

5. The Distribution Company awaits the third last Business Day of the month, which is the deadline for notification of a Change of Supplier at Short Notice. If no takeover of the supply is notified, the Distribution Company contacts the Public Supply Obligation Company inquiring if it wishes to take over the supply of the relevant consumer.
6.
 - A. The previous Gas Supplier stops the supply on the Appointed Date.
 - B. The Distribution Company implements the change on the Appointed Date or closes down the Metering Site if no notification has been given of a takeover of the supply and the Public Supply Obligation Company does not wish to take over the supply of the consumer.
 - C. The new Gas Supplier starts the supply on the Appointed Date.
7. In the case of a Daily Read Metering Site, the previous Gas Supplier submits the consumption statement to the consumer pursuant to the applicable rules once the necessary basis for settlement is available.

If the previous Gas Supplier supplies natural gas to a Daily Read Metering Site, the business scenario ends here.

8. In the case of a Non-Daily Read Metering Site, the Distribution Company informs the previous Gas Supplier of the consumption metered up to the Appointed Date.
9. In the case of a Non-Daily Read Metering Site, the Distribution Company and the previous Gas Supplier assess the consumption of gas and gas transport and send a consumption statement to the consumer pursuant to the applicable rules once the necessary basis for settlement is available.

2.2.4 Deadlines for notification of end of supply

Process	Deadline	Explanation
Request	The message must be received by the Distribution Company between the sixth and eighth Business Day of the preceding gas month.	Request for end of supply
Submission of consumption data for a Non-Daily Read Metering Site	Not later than 20 Business Days after the Appointed Date.	The Distribution Company submits consumption data for a Non-Daily Read Metering Site to the previous Gas Supplier.

Table 2. Deadlines for notification of end of supply

2.2.5 Data content for notification of end of supply

The significant data fields involved in the individual data flows are mentioned below. By significant is meant crucial for a professional handling of the scenario.

Information about end of supply

- Metering Site id
- End date of supply
- Supplier id

Confirmation of end of supply - approval

- Metering Site id
- End date of supply

Confirmation of end of supply - rejection

- Metering Site id
- Reason for response

Information on non-daily read consumption

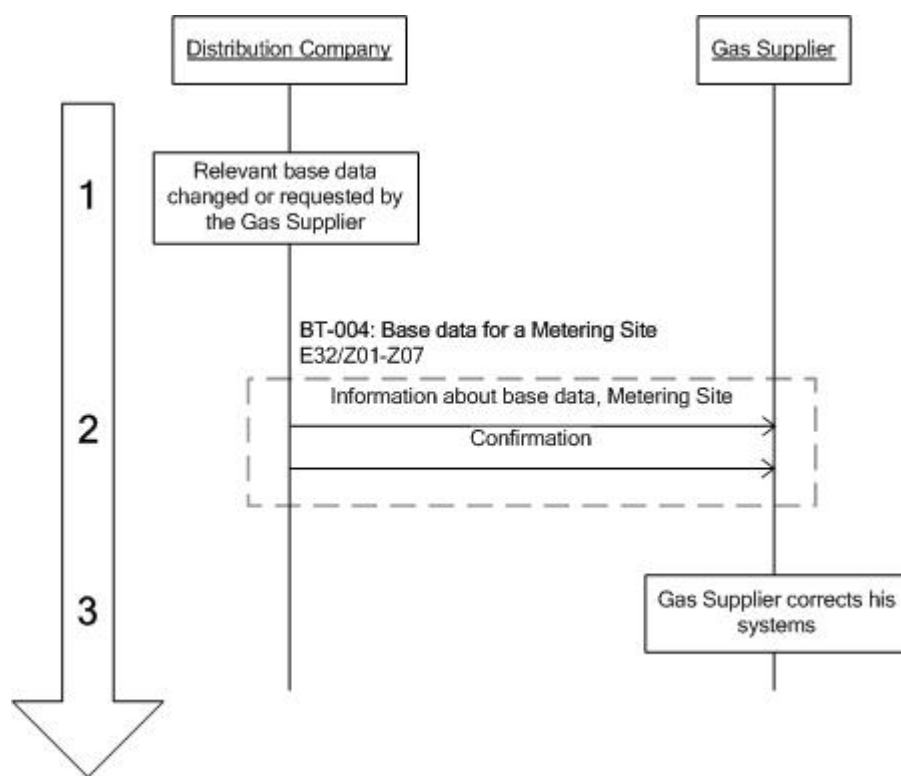
- Metering Site id
- Quantity time interval
- Product code
 - 3002: Total consumption in kWh₀
 - 3004: Total consumption in Nm³ (if conversion equipment available)
 - 3006: Total consumption in m³ (if conversion equipment NOT available)
- Quantity (showing up to three decimals)
- Code for reason for reading
- Quantity status
 - 99: Final value, estimated
 - 136: Final value, metered
 - Z01: Manually corrected value

2.2.6 Identification of scenario and transactions

The unambiguous denominations of the business scenario and the transactions involved are given in the chart below.

BS ID	BS-202
BS name	End of supply
BS version	2
BS release	0
BS date	1st June 2010
EDI transactions:	
BT ID	DK-BT-003
BT name	End of supply – to MPA
BT version	3
BT ID	DK-BT-007
BT name	Consumption for Metering Site, profiled
BT version	3

2.3 BS-203: Submission of base data



Figuer 3: BS-203: Submission of base data.

2.3.1 General

The Distribution Company is responsible for the base data of a given metered site. Changes in the base data used by the Gas Supplier must be communicated to him as soon as possible and pursuant to this business scenario. Once a change of supplier of a Metering Site has been approved, the updated base data must also be sent to the new Gas Supplier including the values applicable from the Appointed Date. If a change is made from non-daily to daily read consumption, a final assessment made according to the relevant business scenarios must also be submitted.

If several data in relation to a metered site have changed, and more than one validity start date is involved, a transaction must be sent for each date.

The Distribution Company's IT system must be capable of submitting **all** base data applying to a given Gas Supplier. The Gas Supplier may put forward a manual request for submission of base data for all his Metering Sites. Such requests can only be filed with the Distribution Company twice annually, and the Distribution Company will send the data either via EDI communication or using another structured format, eg Excel.

This business scenario consists of one transaction:

- Base data for a Metering Site

2.3.2 Start condition for submission of base data

The Distribution Company has observed that base data relevant to the Gas Supplier have been changed. It may be that a control reading has resulted in a different estimated annual consumption, or the actual consumer has asked to have his on account settlement changed as consumption at the Metering Site has changed. The message is also sent when the estimated annual consumption is assessed in connection with an annual reading. The Distribution Company's submission of a base data message to the Gas Supplier can be caused by the following:

- Update of base data as agreed
- Change of Metering-Site address
- Change of next scheduled date(s) of reading
- Change of estimated annual consumption
- Change of consumer party name(s),
- Change of physical status of Metering Site
- Change of meter-reading method

2.3.3 Stages in the scenario of submission of base data

1. The Distribution Company observes that relevant base data have changed, or the Gas Supplier has requested that base data be submitted.
2. The Distribution Company sends a message containing base data to the Gas Supplier specifying their validity start date.

The Gas Supplier checks that the Metering Site is one that he supplies. If the Gas Supplier rejects the message, the Distribution Company can send a new message or contact the Gas Supplier by other means.

3. Having received the new base data, the Gas Supplier corrects his systems entering the base data that have been changed in accordance with the cause of transaction given. Other base data contained in the message can be ignored.

2.3.4 Deadlines for submission of base data

Process	Deadline	Explanation
Updating of base data	Not later than 1 Business Day after updating	The Distribution Company submits the updated base data to the Gas Supplier

Table 3. Deadlines for submission of base data

2.3.5 Data content for submission of base data

The significant data fields involved in the individual data flows are mentioned below. By significant is meant crucial for a professional handling of the business scenario.

Information on base data, Metering Site

- Cause of transaction
 - E32: Agreed update of base data as agreed
 - Z02: Change of Metering-Site address
 - Z03: Change of next scheduled date(s) of reading
 - Z04: Change of estimated annual consumption
 - Z05: Change of consumer party name(s)
 - Z06: Change of physical status of Metering Site
 - Z07: Change of meter-reading method
- Metering-Site id
- Metering-Site address (coded address)
- Reading method at metering site
- Physical status of Metering Site
- Validity start date
- Start date of supply
- Supplier id
- Date of reading
- Estimated annual consumption
- Consumer party name and second consumer party name, if appropriate

2.3.6 Identification of scenario and transactions

The unambiguous denominations of the business scenario and the transactions involved are given in the chart below.

BS ID	BS-203
BS name	Submission of base data
BS version	2
BS release	0
BS date	1st June 2010
EDI transactions:	
BT ID	DK-BT-004
BT name	Base data for Metering Site
BT version	3

2.4 BS-204: Change of Supplier at Short Notice

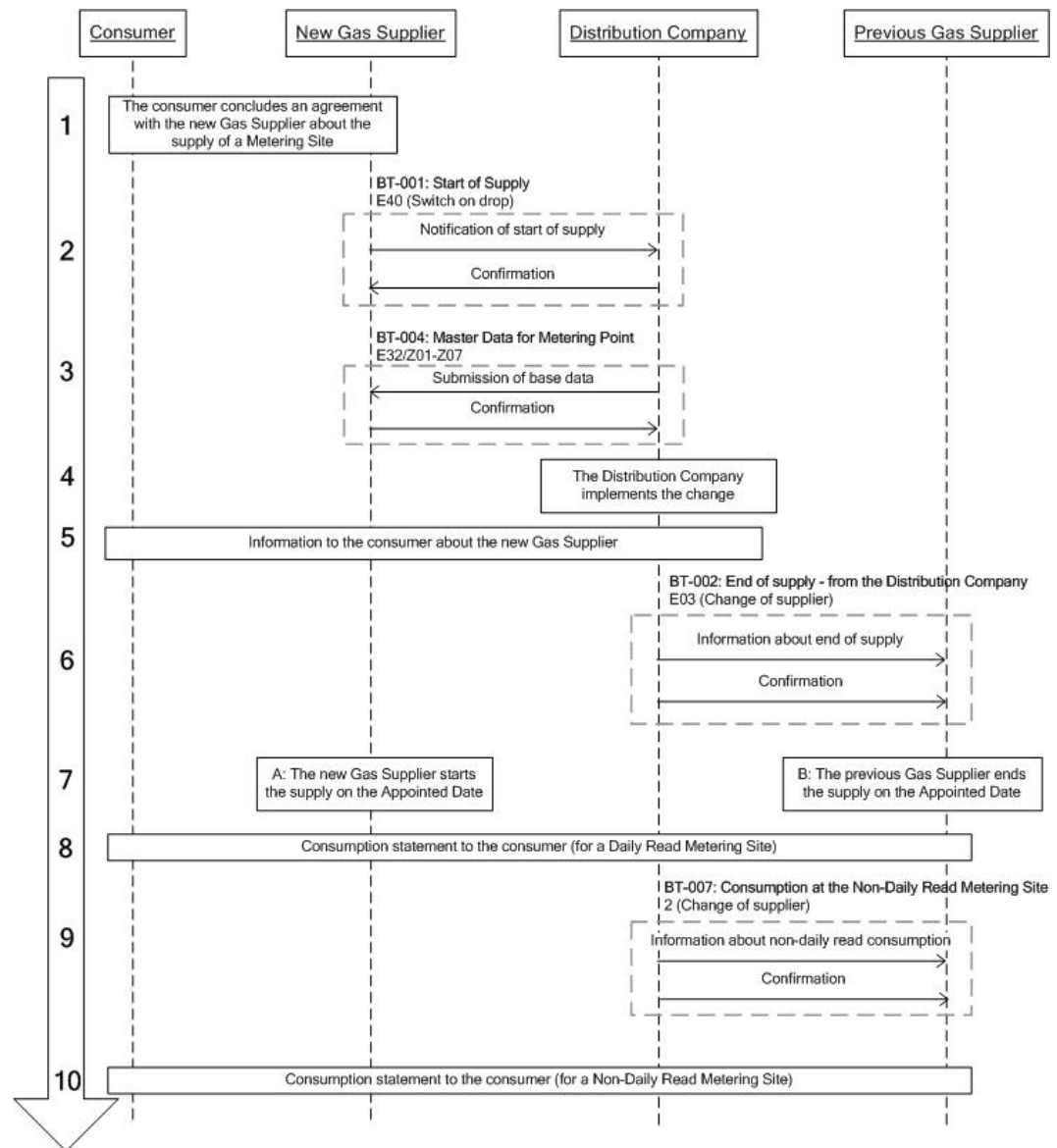


Figure 4: BS-204: Change of Supplier at Short Notice.

2.4.1 General

This scenario is used for changes of supplier at shorter notice than the usual one-month notice. In principle, the Distribution Company's system is closed for receipt of requests for short-noticed changes of supplier, so if a Gas Supplier wishes to request a Change of Supplier at Short Notice, he must arrange this beforehand (eg by telephone) with the Distribution Company. The Distribution Company then opens its system in respect of the particular Metering Site to allow receipt of a request for Change of Supplier at Short Notice. If no such prior arrangement has been made, and the Gas Supplier proceeds to send a request for Change of Supplier at Short Notice, the sys-

tem will reject the request except in one instance: Metering Sites for which the previous Gas Supplier has submitted an end-of-supply message on the sixth, seventh or eighth day of a month will automatically be open for the receipt of requests for short-noticed changes of supplier until the end of the month.

By way of example, the Change of Supplier at Short Notice is used when a Gas Supplier gives notification of end of supply close to the deadline.¹ In this case, the consumer will typically be allowed a few days to arrange with a new Gas Supplier to submit a notification of his taking over the supply. If no such notification of takeover is received, the Metering Site will be disconnected or in future be supplied by the Public Supply Obligation Company.

This scenario is a simplified version of BS-201, ie the Gas Supplier cannot cancel the takeover. The business scenario consists of three transactions:

- Notification of start of supply
- Notification to the previous Gas Supplier of end of supply
- Communication to the previous Gas Supplier of the consumption metered at the Non-Daily Read Metering Site.

2.4.2 Start condition for notification of Change of Supplier at Short Notice

Before the new Gas Supplier can send an electronic notification of Change of Supplier at Short Notice in respect of a Metering Site, contact must be established with the consumer regarding the supply of natural gas to the relevant Metering Site as from a specified Appointed Date.

2.4.3 Stages in the scenario of notification of Change of Supplier at Short Notice

1. The consumer enters into a contract with the new Gas Supplier on the supply of natural gas to a given a Metering Site.
2. Following the conclusion of the contract, the new Gas Supplier communicates the Change of Supplier at Short Notice to the Distribution Company. If the Distribution Company rejects the communication, it must specify one of the following reasons:
 - Metering Site not identifiable
 - Unauthorised Gas Supplier
 - Requested Appointed Date not within deadline

¹ Note that also in this case the previous Gas Supplier will receive an end-of-supply message from the distribution company.

- Metering Site blocked for change, eg because
 - a change on the Appointed Date has already been communicated
- Already existing relation

Having approved the request for a change of supplier, the Distribution Company submits the base data applying to the Metering Site in a separate message enabling the new Gas Supplier to check the identity of the consumer. In case the street code does not exist and consequently does not appear from the base data message, the street code for the Metering Site address will be submitted in a new message.

It is the new Gas Supplier's responsibility, on the basis of the consumer party name and the address of the Metering Site, to manually check that the change of supplier has been made for the correct Metering Site.

3. Having accepted the change of supplier, the Distribution Company must implement the change before the applicable deadline.
4. The Distribution Company enters the change of supplier into its customer system and informs the consumer accordingly.
5. The Distribution Company notifies the previous Gas Supplier of the end of supply. If the recipient is not the Gas Supplier of the Metering Site, the notification is rejected, and the Distribution Company must contact the previous Gas Supplier in another way.
6. A: The new Gas Supplier starts the supply of the approved Metering Site on the Appointed Date.

B: The previous Gas Supplier stops the supply on the Date Appointed for the change of supplier.
7. When the necessary basis for settlement in respect of a Daily Read Metering Site is available, the previous Gas Supplier sends the consumption statement to the consumer pursuant to the applicable rules.

If the previous Gas Supplier supplies gas to a Daily Read Metering Site, the business scenario ends here.

8. In the case of a Non-Daily Read Metering Site, the Distribution Company communicates consumption data up to the Appointed Date to the previous Gas Supplier.

9. In the case of a Non-Daily Read Metering Site, the Distribution Company and the previous Gas Supplier assess the consumption of gas and gas transport and send a consumption statement to the consumer pursuant to the applicable rules once the necessary basis for settlement is available.

In the case of a Non-Daily Read Metering Site, the consumption statement may result in a new value in respect of estimated annual consumption. In this case, the Distribution Company submits base data for the Metering Site to the new Gas Supplier subject to business scenario BS-203: Submission of base data.

2.4.4 Deadlines for Change of Supplier at Short Notice

Process	Deadline	Explanation
Request for Change of Supplier at Short Notice	Not later than 3 Business Days prior to the gas day on which the change of supplier is to take effect	Notice of request for Change of Supplier at Short Notice.
Submission of base data	Not later than 1 Business Day after acceptance of request for change of supplier	Submission of base data to the new Gas Supplier following confirmation of start of supply.
Message about end of supply	Not later than 1 Business Day after receipt of request	The Distribution Company notifies the previous Gas Supplier of the end of supply.
Submission of consumption data for a Non-Daily Read Metering Site	Not later than 20 Business Days after the Appointed Date	The Distribution Company submits consumption for a Non-Daily Read Metering Site to the previous Gas Supplier.

Table 4. Deadlines for Change of Supplier at Short Notice

2.4.5 Data content for Change of Supplier at Short Notice

The significant data fields involved in the individual data flows are mentioned below. By significant is meant crucial for a professional handling of the business scenario.

Notification of start of supply

- Metering Site id
- Start date of supply
- Supplier id

Confirmation of start of supply - approval

- Metering Site id
- Start date of supply
- Supplier id
- Consumer party name or second consumer party name, if appropriate

Confirmation of start of supply - rejection

- Metering Site id
- Reason for rejection

Submission of base data

- Cause of transaction:
 - E40 Change of Supplier at Short Notice
- Metering Site id
- Metering Site address (coded address)
- Reading method at Metering Site
- Physical status of Metering Site
- Validity start date

- Start date of supply
- Supplier id
- Date of reading
- Estimated annual consumption
- Consumer party name or second consumer party name, if appropriate

Information about end of supply

- Metering Site id
- End date of supply

Information about non-daily read consumption

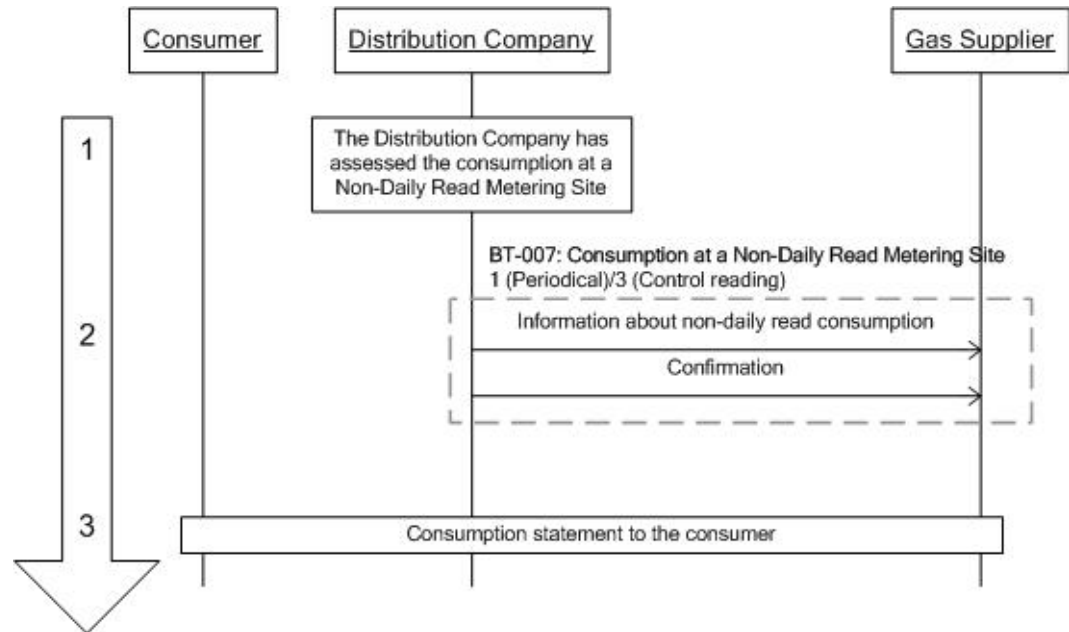
- Metering Site id
- Quantity time interval
- Product code
 - 3002: Total consumption in kWh₀
 - 3004: Total consumption in Nm³ (if conversion equipment available)
 - 3006: Total consumption in m³ (if conversion equipment NOT available)
- Quantity (showing up to three decimals)
- Code for reason for reading
- Quantity status
 - 99: Final value, estimated
 - 136: Final value, metered
 - Z01: Manually corrected value

2.4.6 Identification of scenario and transactions

The unambiguous denominations of the business scenario and the transactions involved are given in the chart below.

BS ID	BS-204
BS name	Change of Supplier at Short Notice
BS version	2
BS release	0
BS date	1st June 2010
EDI transactions:	
BT ID	DK-BT-001
BT name	Start of supply
BT version	3
BT ID	DK-BT-004
BT name	Master Data for Metering Point
BT version	3
BT ID	DK-BT-002
BT name	End of supply - from MPA
BT version	3
BT ID	DK-BT-007
BT name	Consumption for Metering Site, profiled
BT version	3

2.5 BS-205: Consumption statement for a Non-Daily Read Metering Site



Figuer 5: BS-205: Consumption statement for a Non-Daily Read Metering Site.

2.5.1 General

The consumption statement for a Non-Daily Read Metering Site is used, for instance, in connection with ordinary periodical readings, whether monthly or annual. The business scenario is also used in case a control reading causes an already effected settlement to be changed. The Gas Supplier will be informed by means of a new consumption statement for the period in question.

This business scenario consists of one transaction:

- Submission of consumption data for a Non-Daily Read Metering Site (to the Gas Supplier).

2.5.2 Start condition for submission of consumption statement for a Non-Daily Read Metering Site

In connection with, for instance, an ordinary periodical reading, the Distribution Company has assessed the consumption at a Non-Daily Read Metering Site and quality-checked it pursuant to company procedures.

2.5.3 Stages in the scenario of submission of consumption statement for a Non-Daily Read Metering Site

1. The Distribution Company assesses the consumption at a Non-Daily Read Metering Site.
2. In the case of a Non-Daily Read Metering Site, the Distribution Company notifies the Gas Supplier of the consumption metered in the relevant period.
3. In the case of a Non-Daily Read Metering Site, the Distribution Company and the Gas Supplier assess the consumption of gas and gas transport and send a consumption statement to the consumer pursuant to the applicable rules once the necessary basis for settlement is available.

2.5.4 Correction of metered values

If the Distribution Company discovers an error in a previously submitted consumption statement for a Metering Site, a correction message must be sent involving only Metering Sites with values corrected in respect of previously submitted consumption statements.

2.5.5 Error handling in relation to the Gas Supplier

In respect of metering errors, the Distribution Company is subject to the practices of the Danish Energy Regulatory Authority in relation to the length of the period for which the consumer is to receive retrospective refunding or effect retrospective payment to the Distribution Company with regard to metering errors. Refunding of metering errors is effected on the basis of a corrected consumption statement.

The Gas Supplier is subject to the same rules regarding deferred adjustment as the Distribution Company, and the Distribution Company is responsible for giving the Gas Supplier the correct basis for his settlement in relation to the consumer. As a consequence, the consumption correction, which forms the basis for any deferred adjustment of the consumer's distribution payment, is sent to the Gas Supplier(s) that have been servicing the Metering Site in the period for which the distribution payment may be subject to deferred adjustment. The consumption correction is sent to the Gas Supplier via EDI communication as a correction of consumption statements previously submitted to him.

2.5.6 Deadlines for submission of consumption statement for a Non-Daily Read Metering Site

Process	Deadline	Explanation
Communication of consumption data to the Gas Supplier.	In the case of monthly readings, not later than the tenth Business Day of the month. In the case of annual readings, not later than the twentieth Business Day after the date of reading.	The Distribution Company sends consumption data to the Gas Supplier for monthly or annually read Metering Sites.

Table 5. Deadlines for submission of consumption statement for a Non-Daily Read Metering Site

2.5.7 Data content for submission of consumption statement for a Non-Daily Read Metering Site

The significant data fields involved in the individual data flows are mentioned below. By significant is meant crucial for a professional handling of the business scenario.

Information about non-daily read consumption

- Message function
 - 9 Original (for the first submission(s))
 - 5 Replace (for correction message)
- Value interval
- Metering Site id
- Quantity time interval
- Product code
 - 3002: Total consumption in kWh₆
 - 3004: Total consumption in Nm³ (if conversion equipment available)
 - 3006: Total consumption in m³ (if conversion equipment NOT available)
- Quantity (showing up to three decimals)
- Code for reason for reading
- Quantity status
 - 99: Final value, estimated
 - 136: Final value, metered
 - Z01: Manually corrected value

2.5.8 Identification of scenario and transactions

The unambiguous denominations of the business scenario and the transactions involved are given in the chart below.

BS ID	BS-205
BS name	Consumption statement for a Non-Daily Read Metering Site
BS version	2

BS release	0
BS date	1st June 2010
EDI transactions:	
BT ID	DK-BT-007
BT name	Consumption for Metering Site, profiled
BT version	3

2.6 BS-206: Consumption statement for a Daily Read Metering Site

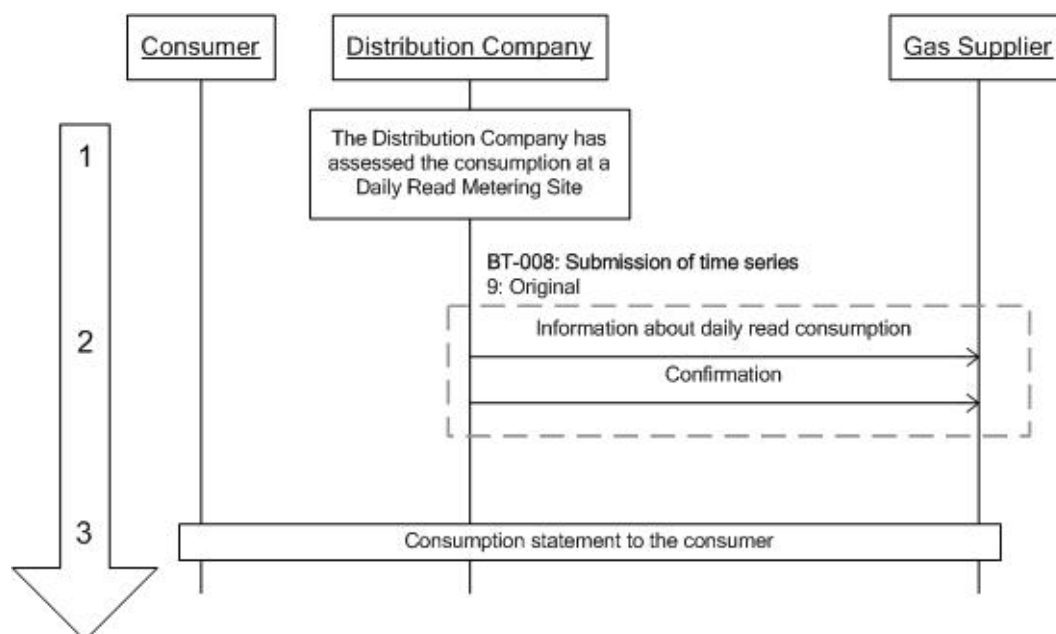


Figure 6: BS-206: Consumption statement for a Daily Read Metering Site.

2.6.1 General

In the case of a Daily Read Metering Site, the Non-Validated consumption is assessed on a daily basis. The resulting figures are to be made available to the Gas Supplier for his nomination. The message is therefore sent daily in the form of hourly values for the preceding gas day and in compliance with the agreed deadlines.

At the expiry of the month, hourly values for the entire month are resubmitted specifying the relevant month's Validated hourly values to be used for the invoicing of the consumer.

In addition to daily and monthly (re)submitted hourly values this business scenario is also used in case a control reading causes an already effected settlement to be changed. The Gas Supplier will be informed by means of a new consumption statement for the period in question.

For a Daily Read Metering Site, the Gas Supplier may request a consumption profile from the Distribution Company. To protect sensitive data, the Distribution Company must make sure that the consumer has permitted disclosure of the consumption pro-

file. The request is made manually, and the consumption profile is sent in a comma-separated format.

This business scenario consists of one transaction:

- Submission of time series

2.6.2 Start condition for submission of consumption statement for a Daily Read Metering Site

The Distribution Company assesses the daily read consumption on a daily or monthly basis.

2.6.3 Stages in the scenario of submission of consumption statement for a Daily Read Metering Site

1. The Distribution Company assesses the consumption for a Daily Read Metering Site.
2. In the case of a Daily Read Metering Site, the Distribution Company informs the Gas Supplier of the consumption.
3. Once the Gas Supplier has received the Validated consumption data, the consumer can in principle be invoiced.

2.6.4 Correction of metered values

If the Metering Site administrator discovers an error in previously submitted Non-Validated data for a Metering Site, replacement values must be sent provided the error is considered material. If the Metering Site administrator discovers an error in previously submitted Validated data for a Metering Site, the error must be remedied pursuant to the rules laid down in section 2.5.5.

2.6.5 Deadlines for submission of consumption data for a Daily Read Metering Site

Process	Deadline	Explanation
Communication of consumption data (Non-Validated) to the Gas Supplier.	Not later than at 11:00 on every gas day (for the previous gas day).	Every day, the Distribution Company sends Non-Validated consumption data for Daily Read Metering Sites to the Gas Supplier.
Communication of consumption data	Not later than on the sixth Business Day of	Every month, the Distribution Company sends Validated consumption data for Daily Read Meter-

(Validated) to the Gas Supplier.	the month for the previous month's consumption.	ing Sites to to the Gas Supplier.
----------------------------------	---	-----------------------------------

Table 6. Deadlines for submission of consumption statement for Daily Read Metering Sites

2.6.6 Data content for submission of consumption statement for Daily Read Metering Sites

The significant data fields involved in the individual data flows are mentioned below. By significant is meant crucial for a professional handling of the business scenario.

Information about daily read consumption

- Message function
 - 9 Original
- Quantity time period (daily messages contain 1x24 hourly values, and monthly messages contain 30x24 hourly values)
- Metering Site id
- Quantity time interval
- Product code
 - 3001/3002: Total consumption in kWh_o (Non-Validated/Validated)
 - 3003/3004: Total consumption in Nm³ (Non-Validated/Validated) (if conversion equipment available)
 - 3005/3006: Total consumption in m³ (Non-Validated/Validated) (if conversion equipment NOT available)
- Quantity (showing up to three decimals)
- Quantity status
 - 99: Final value, estimated
 - 136: Final value, metered
 - Z01: Final value, manually corrected

2.6.7 Identification of scenario and transactions

The unambiguous denominations of the business scenario and the transactions involved are given in the chart below.

BS ID	BS-206
BS name	Consumption statement for Daily Read Metering Sites
BS version	2
BS release	0
BS date	1st June 2010
EDI transactions:	
BT ID	DK-BT-008
BT name	Time series transmission
BT version	3

2.7 BS-207: Relocation (vacating consumer) notified to the Distribution Company

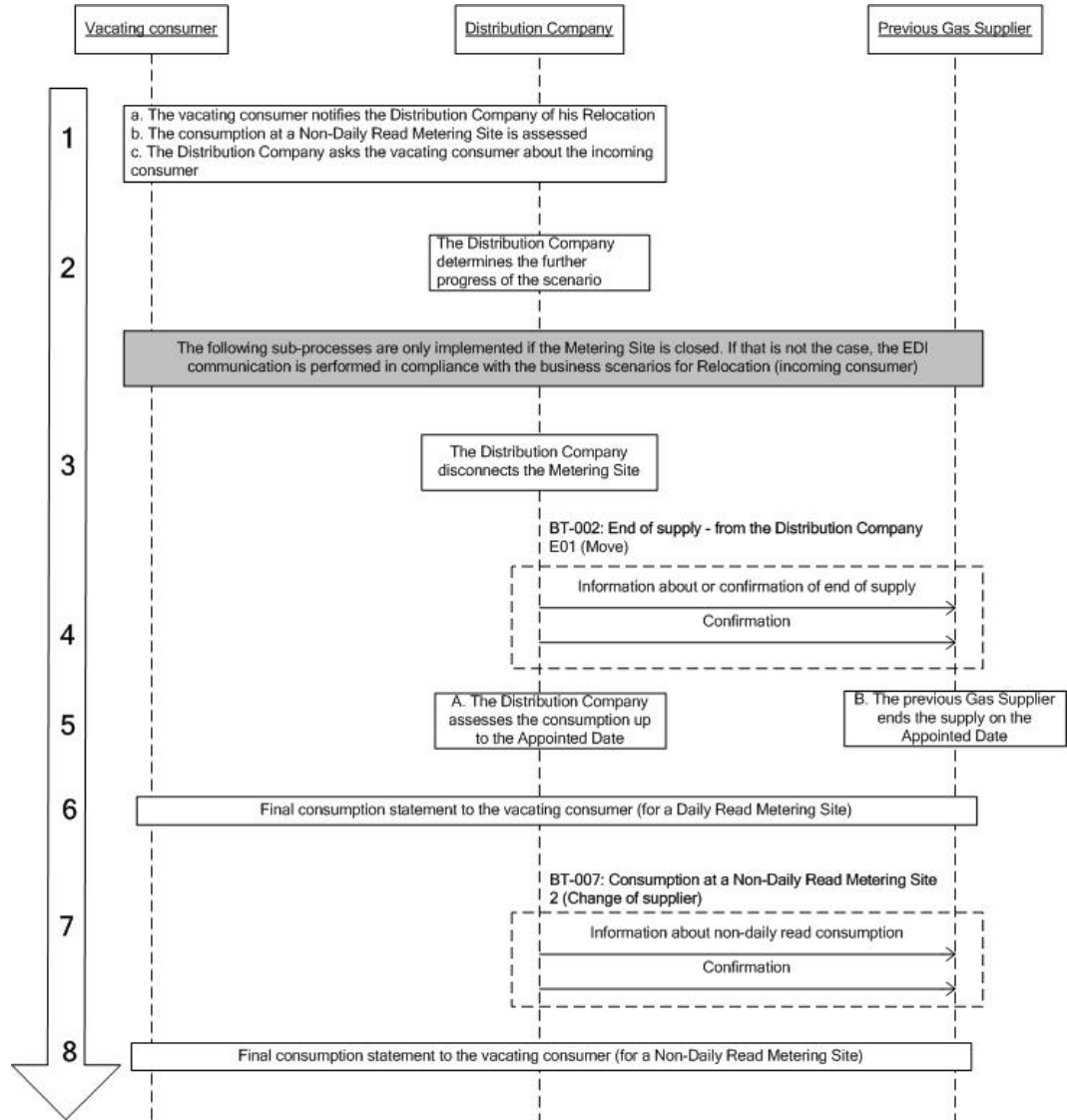


Figure 7: BS-207: Relocation (vacating consumer) notified to the Distribution Company

2.7.1 General

A Gas Supplier remains responsible for a given Metering Site until a vacating consumer notifies the Distribution Company of the Relocation, and the Distribution Company informs the Gas Supplier accordingly. The same business scenario applies if a consumer goes into bankruptcy/liquidation and the estate does not carry out activities at the Metering Site.

This scenario also applies in case the Metering Site is closed down.

This business scenario consists of two transactions:

- End of supply - from the Distribution Company
- Consumption statement for a Non-Daily Read Metering Site

2.7.2 Start condition for Relocation (vacating consumer) notified to the Distribution Company

The vacating consumer informs the Distribution Company of the upcoming Relocation.

2.7.3 Stages in the scenario of Relocation (vacating consumer) notified to the Distribution Company

- 1a. The vacating consumer notifies the Distribution Company of the Relocation.

With a view to submission of a final consumption statement, the above-mentioned initial notification of the Distribution Company of the upcoming Relocation specifies not only the date of the vacation of premises but also vacator's new address.

- 1b. In the case of a Non-Daily Read Metering Site, a meter reading must be made on the Appointed Date pursuant to the Distribution Company's rules (see section 2.8.5), and the vacator must be informed accordingly.

- 1c. The Distribution Company requests information from the vacator about the incoming consumer.

2. On the basis of vacator's information and the Distribution Company's knowledge of ownership etc., the Distribution Company determines the further progress of the scenario. If the incoming consumer is known, this business scenario is brought to a close, and Relocation is concluded in parallel with the registration of the arrival of the incoming consumer (from stage 1) as described in business scenario BS-208: Relocation (incoming consumer) notified to the Distribution Company or BS209: Relocation (incoming consumer notified to the Gas Supplier).

If the incoming consumer is not known, the Metering Site can be disconnected as there is no consumer at the premises to pay for any metered consumption.

If the Metering Site is a rented dwelling, the vacator may, however, vacate the premises without leaving information about any incoming consumer since the owner will automatically become the incoming consumer. In this case, the Relocation is concluded in parallel with the registration of the owner as in-

coming consumer as described in business scenario BS-208: Relocation (incoming consumer) notified to the Distribution Company (from stage 1).

The following sub-processes are only implemented if the Metering Site is to be closed. If that is not the case, the EDI communication is performed in connection with BS-208: Relocation (incoming consumer) notified to the Distribution Company or BS-209: Relocation (incoming consumer) notified to the .

3. The Distribution Company may disconnect the Metering Site.
4. The Distribution Company informs the Gas Supplier of the end of supply giving as cause of transaction E01 (Relocation). If a change of supplier has been registered for the Metering Site, the new Gas Supplier is also informed.
5.
 - A. On the basis of a meter reading on the Appointed Date for the Relocation, the Distribution Company assesses the consumption up to the Appointed Date.
 - B. The previous Gas Supplier stops the supply on the Appointed Date.
6. In the case of a Daily Read Metering Site, the Distribution Company and the previous Gas Supplier assess the consumption of gas and gas transport and send a final consumption statement to the vacating consumer pursuant to the applicable rules once the necessary basis for settlement is available.

If the previous Gas Supplier supplies a Daily Read Metering Site, the business scenario ends here.

7. In the case of a Non-Daily Read Metering Site, the Distribution Company notifies the Gas Supplier of the consumption metered up to the Appointed Date.
8. In the case of a Non-Daily Read Metering Site, the Distribution Company and the previous Gas Supplier assess the consumption of gas and gas transport and send a final consumption statement to the vacating consumer according to the applicable rules once the necessary basis for settlement is available.

2.7.4 Deadlines for Relocation (vacating consumer) notified to the Distribution Company

Process	Deadline	Explanation
Notification about end of supply.	As soon as possible after receipt of vacator's notice of termination.	The Distribution Company submits a request for end of supply to the Gas Supplier.
Submission of consumption for a Non-Daily Read Metering Site	Not later than 20 Business Days after the Date Appointed for Relocation.	The Distribution Company submits consumption data for a Non-Daily Read Metering Site to the previous Gas Supplier.

2.7.5 Data content for Relocation (vacating consumer) notified to the Distribution Company

The significant data fields involved in the individual data flows are mentioned below. By significant is meant crucial for a professional handling of the business scenario.

Information about or confirmation of end of supply

- Metering Site id
- End date of supply

Information about non-daily read consumption

- Metering Site id
- Quantity time interval
- Product code
 - 3002: Total consumption in kWh₀
 - 3004: Total consumption in Nm³ (if conversion equipment available)
 - 3006: Total consumption in m³ (if conversion equipment NOT available)
- Quantity (showing up to three decimals)
- Code for reason for reading
- Quantity status
 - 99: Final value, estimated
 - 136: Final value, metered
 - Z01: Value, manually corrected

2.7.6 Identification of scenario and transactions

The unambiguous denominations of the business scenario and the transactions involved are given in the chart below.

BS ID	BS-207
BS name	Relocation (vacating consumer) notified to the Distribution Company
BS version	2
BS release	0
BS date	1st June 2010
EDI transactions:	
BT ID	DK-BT-002
BT name	End of supply – from MPA
BT version	3
BT ID	DK-BT-007
BT name	Consumption for Metering Site, profiled
BT version	3

2.8 BS-208: Relocation (incoming consumer) notified to the Distribution Company

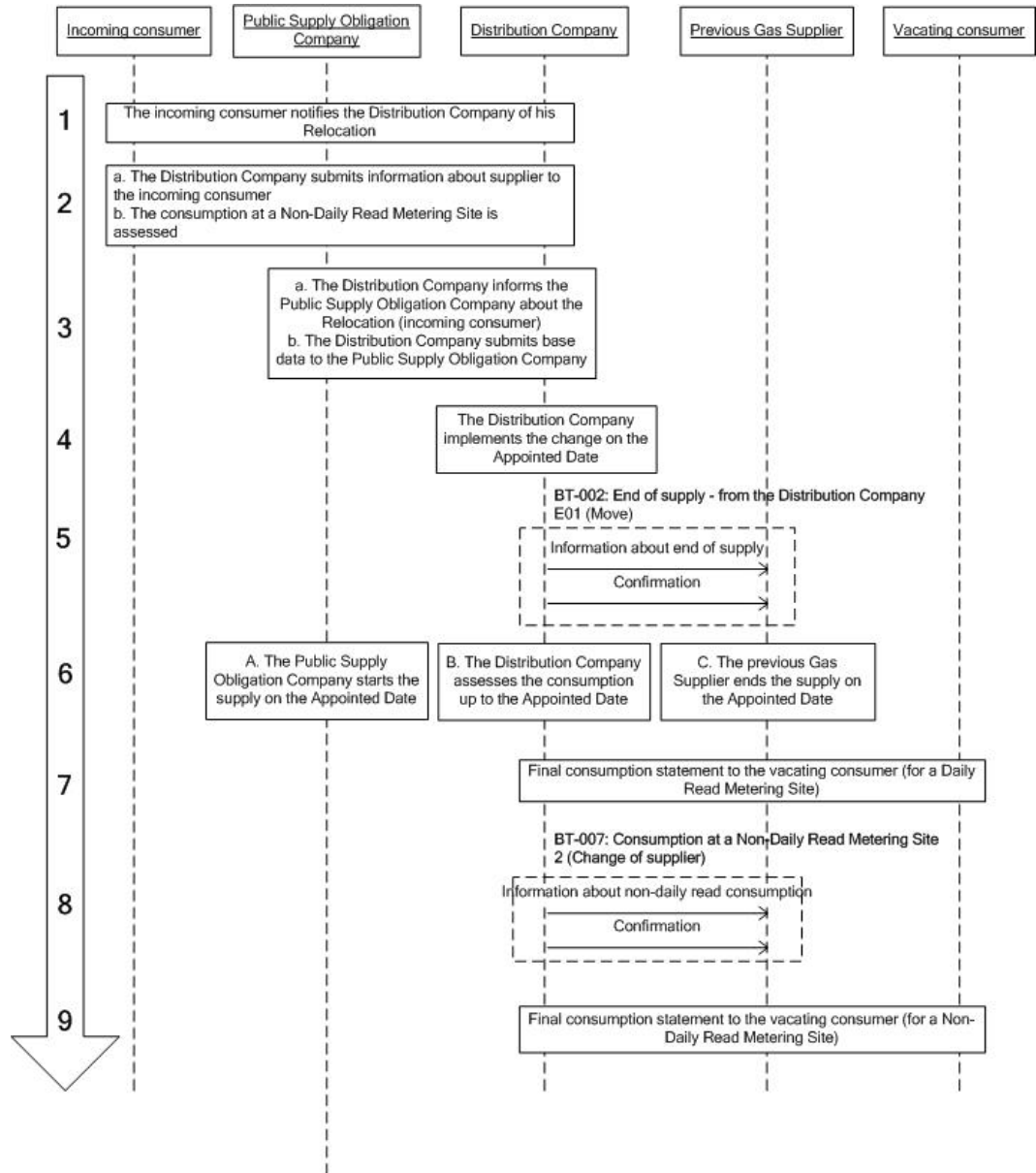


Figure 8: BS-208: Relocation (incoming consumer) notified to the Distribution Company

2.8.1 General

This scenario applies to the situation in which the new Gas Supplier does not submit a notification of the arrival of an incoming consumer at the Metering Site. In this case, the incoming consumer contacts the Distribution Company and is assigned the Public Supply Obligation Company as his Gas Supplier. The scenario also applies if a consumer goes into bankruptcy/liquidation and the estate continues to carry out activities at the Metering Site.

This business scenario consists of two transactions:

- End of supply - from the Distribution Company
- Consumption data for a Non-Daily Read Metering Site

2.8.2 Start condition for Relocation (incoming consumer) notified to the Distribution Company

The consumer relocates to the Metering Site. The situation of the vacating consumer is one of two: Either he has already submitted a notification of his Relocation (BS-207: Relocation (vacating consumer) notified to the Distribution Company), or he has not submitted a notification.

2.8.3 Stages in the scenario of Relocation (incoming consumer) notified to the Distribution Company

1. The incoming consumer notifies the Distribution Company that he has relocated to the Metering Site if he wishes the Public Supply Obligation Company to be his Gas Supplier or is unable to comply with the deadline involved if another Gas Supplier were to submit notification of Relocation (incoming consumer) in time. If the incoming consumer does not contact the Distribution Company but it has been given his name by the vacating consumer or the owner of the premises, the Distribution Company may simply register the incoming consumer, informing him accordingly.

If the incoming consumer has submitted a notification of Relocation (incoming consumer) to the Distribution Company **and** concluded an agreement with a new Gas Supplier, who submits a notification of start of supply in time, the incoming consumer will be registered onto the Gas Supplier's consumer portfolio.

- 2a. The Distribution Company provides the incoming consumer with details concerning the supplier of the Metering Site and other necessary information. The incoming consumer may lodge a complaint in case the information about the supplier is not correct.
- 2b. In the case of a Non-Daily Read Metering Site, a meter reading must be made on the Appointed Date pursuant to the Distribution Company's rules (see section 2.8.5), and the incoming consumer must be informed accordingly.

The incoming consumer is asked to perform a meter reading on the Appointed Date if, in his notification of Relocation, he did not include the result of a reading made at that time. If the notification of incoming consumer arrives later than on the requested Appointed Date, the incoming consumer must still

be asked to perform a meter reading, however not later than 1 month after the Appointed Date.

- 3a. The Distribution Company notifies the Public Supply Obligation Company of the start of supply due to Relocation (incoming consumer).
- 3b. The Distribution Company provides the Public Supply Obligation Company with base data.
4. The Distribution Company implements the change on the Appointed Date.
5. The Distribution Company notifies the previous Gas Supplier of end of supply specifying as transaction cause E01 (Relocation). If a change of supplier for the Metering Site has been registered, a message is also sent to the future Gas Supplier.
6.
 - A. The Public Supply Obligation Company starts the supply on the Appointed Date.
 - B. On the basis of a meter reading relating to the incoming consumer and one relating to the vacating consumer, if appropriate, the Distribution Company assesses the consumption of the latter.
 - C. The previous Gas Supplier stops the supply on the Appointed Date.
7. In the case of a Daily Read Metering Site, the Distribution Company and the previous Gas Supplier assess the consumption of gas and gas transport and send a final consumption statement to the vacating consumer pursuant to the applicable rules once the necessary basis for settlement is available.

If the previous Gas Supplier supplies a Daily Read Metering Site, the business scenario ends here.

8. In the case of a Non-Daily Read Metering Site, the Distribution Company informs the Gas Supplier of the consumption metered up to the Appointed Date.
9. In the case of a Non-Daily Read Metering Site, the Distribution Company and the previous Gas Supplier assess the consumption of gas and gas transport and send a final consumption statement to the vacating consumer pursuant to the applicable rules once the necessary basis for settlement is available.

2.8.4 Handling of exceeded deadlines in connection with Relocation

Not later than **5 Business Days** after the Appointed Date specified by the consumer, the Distribution Company must be in receipt of a notification of Relocation (vacating and incoming consumer) and a meter-reading result. If the Distribution Company receives the consumer's notification of Relocation more than five Business Days after the Appointed Date specified by the consumer, the Distribution Company will set an Appointed Date on the basis of a seven-business-day notice of termination reckoned from the receipt of the consumer's notification of Relocation. An example of such a situation is given in the following:

A vacating consumer submits a notification of Relocation to take place on 15 June 2007, and no notification of Relocation (incoming consumer) has been received. The premises were vacated on 17 April 2007. Thus the vacator's notification was made more than five days after the Appointed Date requested by himself (the date of his Relocation). The Distribution Company must use as Appointed Date the date of receipt of the notification of Relocation (15 June) plus 7 Business Days, ie 26 June 2007.

2.8.5 Meter reading in connection with Relocation

If a meter reading has been made more than one month after the Distribution Company's Appointed Date, the Distribution Company will arrange for a new reading to be performed. This can be effected either by the vacating/incoming consumer doing a new reading himself or by the Distribution Company undertaking the meter reading at his expense. A meter reading made on the Distribution Company's Appointed Date will be used as is. If the meter reading has not been made on the Distribution Company's Appointed Date but has been performed less than one month after the Distribution Company's Appointed Date, the consumption up to the Appointed Date will be calculated on the basis of the reading. The following provides an example:

On the basis of the vacator's notification of Relocation, the Distribution Company has set 15 June as the Appointed Date. The premises were vacated on 28 May 2007, on which date the vacator read the meter. Thus, less than a month separates the meter reading and the Distribution Company's Appointed Date. The Distribution Company therefore calculates the consumption up to the Appointed Date (15 June) on the basis of the vacator's reading on 28 May.

2.8.6 Deadlines for Relocation (incoming consumer) notified to the Distribution Company

Process	Deadline	Explanation
Notification of end of supply	As soon as possible after the incoming consumer's notification of Relocation.	The Distribution Company submits a request for end of supply to the Gas Supplier.
Submission of consumption data a Non-Daily Read Metering Site.	Not later than 20 Business Days after the Appointed Date.	The Distribution Company submits consumption data for a Non-Daily Read Metering Site to the previous Gas Supplier.

2.8.7 Data content for Relocation (incoming consumer) notified to the Distribution Company

The significant data fields involved in the individual data flows are mentioned below. By significant is meant crucial for a professional handling of the business scenario.

Information about or confirmation of end of supply

- Metering Site id
- End date of supply

Information about non-daily read consumption

- Metering Site id
- Quantity time interval
- Product code
 - 3002: Total consumption in kWh₆
 - 3004: Total consumption in Nm³ (if conversion equipment available)
 - 3006: Total consumption in m³ (if conversion equipment NOT available)
- Quantity (showing up to three decimals)
- Code for reason for reading
- Quantity status
 - 99: Final value, estimated
 - 136: Final value, metered
 - Z01: Value, manually corrected

2.8.8 Identification of scenario and transactions

The unambiguous denominations of the business scenario and the transactions involved are given in the chart below.

BS ID	BS-208
BS name	Relocation (incoming consumer) notified to the Distribution Company
BS version	2
BS release	0
BS date	1st June 2010
EDI transactions:	
BT ID	DK-BT-002
BT name	End of supply – from MPA
BT version	3
BT ID	DK-BT-007
BT name	Consumption for Metering Site, profiled
BT version	3

2.9 BS-209: Relocation (incoming consumer) notified to the Gas Supplier

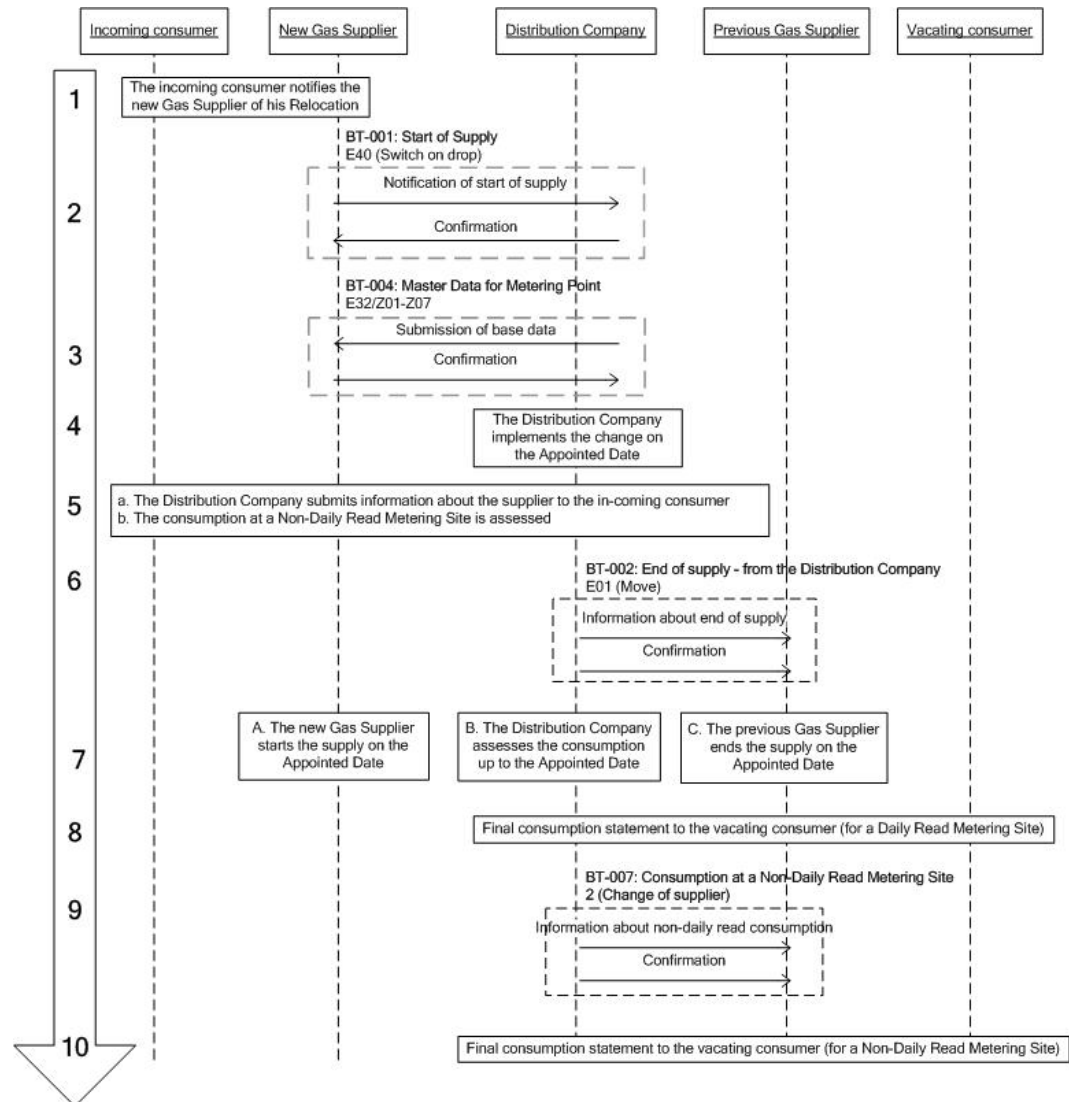


Figure 9: BS-209: Relocation (incoming consumer) notified to the Gas Supplier

2.9.1 General

This business scenario must always be applied if the Gas Supplier wishes to supply the Metering Site as from the Appointed Date approved for the Relocation (incoming consumer). It must also be applied if the Gas Supplier is already the vacating consumer's Gas Supplier at the Metering Site.

This business scenario consists of four transactions:

- Start of supply
- End of supply - from the Distribution Company
- Consumption at a Non-Daily Read Metering Site

- Base data for a Metering Site

2.9.2 Start condition of Relocation (incoming consumer) notified to the Gas Supplier

An incoming consumer is to relocate to the Metering Site and does not wish to have the Public Supply Obligation Company as his Gas Supplier. A contract must be concluded with the incoming consumer regarding the supply of natural gas to the relevant Metering Site as from a specified Appointed Date. The Appointed Date must be the date of the overtaking of the Metering Site, ie overtaking of the lease or the ownership of the property.

2.9.3 Stages in the scenario of Relocation (incoming consumer) notified to the Gas Supplier

1. The incoming consumer contacts the Gas Supplier about his upcoming Relocation stating his GSRN number (EAN-GSRN number) and the requested Appointed Date. If the incoming consumer does not know the relevant meter ID number the Gas Supplier must request the number from the Distribution Company. The incoming consumer also states his name and contact address. The address is relevant if the Metering Site address is not his domicile, eg a summer residence.
2. The Gas Supplier notifies the Distribution Company of the start of supply specifying as cause of transaction E01 (Relocation). The notification contains, among other details, the incoming consumer's contact address. If the Distribution Company rejects the notification, it must give one of the following reasons:
 - Metering Site not identifiable
 - Unauthorised Gas Supplier
 - Requested Appointed Date not within deadline
 - Metering Site blocked for change

If the change is approved, the response will moreover include the base data for the Metering Site.

To ensure that the Relocation has been made for the correct Metering Site, the Gas Supplier checks that the Metering Site address corresponds to the one specified by the incoming consumer. If this is not the case, the Gas Supplier contacts the Distribution Company in order to have the Relocation cancelled.

3. In the case of a Metering Site for which the incoming consumer has been approved, the Distribution Company implements the change on the Appointed Date.

- 4a. The Distribution Company provides the incoming consumer with information about the Gas Supplier corresponding to the meter ID number and other necessary information. If, at this time, it turns out that the notification of incoming consumer should not have been approved, eg because the incoming consumer had already moved in, EDI communication cannot at this point in time be used for the rejection of the incoming consumer, which must instead be implemented by contacting the Gas Supplier.
- 4b. In the case of a Non-Daily Read Metering Site, a meter reading must be made on the Appointed Date pursuant to the Distribution Company's rules (see section 2.8.5), and the incoming consumer must be informed accordingly.
5. The Distribution Company notifies the previous Gas Supplier of the end of supply specifying as transaction cause E01 (Relocation). If the previous and the new Gas Supplier are identical, the IT system must be capable of relating the notification of end of supply to the contract of the vacating consumer. If a change of supplier for the Metering Site has been registered, a message is also sent to the future Gas Supplier.
6.
 - A. The new Gas Supplier starts the supply on the Appointed Date.
 - B. On the basis of a meter reading relating to the incoming consumer and one relating to the vacating consumer, if appropriate, the Distribution Company assesses the consumption of the vacating consumer.
 - C. The previous Gas Supplier stops the supply on the Appointed Date.
7. In the case of a Daily Read Metering Site, the Distribution Company and the previous Gas Supplier assess the consumption of gas and gas transport and send a final consumption statement to the vacating consumer pursuant to the applicable rules once the necessary basis for settlement is available.

If the previous Gas Supplier supplies a Daily Read Metering Site, the business scenario ends here.
8. In the case of a Non-Daily Read Metering Site, the Distribution Company informs the Gas Supplier of the consumption metered up to the Appointed Date.
9. In the case of a Non-Daily Read Metering Site, the Distribution Company and the previous Gas Supplier assess the consumption of gas and gas transport and send a final consumption statement to the vacating consumer pursuant to the applicable rules once the necessary basis for settlement is available.

2.9.4 Deadlines for Relocation (incoming consumer) notified to the Gas Supplier

Process	Deadline	Explanation
Request for start of supply	Not later than three Business Days prior to the Date Appointed for Relocation (incoming consumer)	The Gas Supplier submits notification of Relocation (incoming consumer) on behalf of the incoming consumer.
Submission of base data	Not later than one Business Day after approval of request for start of supply	Submission of base data to the new Gas Supplier following confirmation of start of supply.
Notification of end of supply	As soon as possible after receipt of request	The Distribution Company notifies the previous Gas Supplier of end of supply.
Submission of consumption data for a Non-Daily Read Metering Site.	Not later than 20 Business Days after the Appointed Date.	The Distribution Company sends consumption data for a Non-Daily Read Metering Site to the previous Gas Supplier.

2.9.5 Data content for Relocation (incoming consumer) notified to the Gas Supplier

The significant data fields involved in the individual data flows are mentioned below. By significant is meant crucial for a professional handling of the business scenario.

Notification of start of supply

- Metering Site id
- Start date of supply
- Supplier id
- Consumer party name and second consumer party name, if appropriate

Confirmation of start of supply - approval

- Metering Site id
- Start date of supply
- Supplier id

Confirmation of start of supply - rejection

- Metering Site id
- Reason for rejection

Submission of base data

- Cause of transaction:
 - E01 Relocation

- Metering Site id
- Metering-Site address (coded address)
- Reading method at Metering Site
- Physical status of Metering Site
- Validity start date
- Start date of supply
- Supplier id
- Date of reading
- Estimated annual consumption

Information about end of supply

- Metering Site id
- End date of supply

Information about non-daily read consumption

- Metering Site id
- Quantity time interval
- Product code
 - 3002: Total consumption in kWh₀
 - 3004: Total consumption in Nm³ (if conversion equipment available)
 - 3006: Total consumption in m³ (if conversion equipment NOT available)
- Quantity (showing up to three decimals)
- Code for reason for reading
- Quantity status
 - 99: Final value, estimated
 - 136: Final value, metered
 - Z01: Value, manually corrected

2.9.6 Identification of scenario and transactions

The unambiguous denominations of the business scenario and the transactions involved are given in the chart below.

BS ID	BS-209
BS name	Relocation (incoming consumer) notified to the Gas Supplier
BS version	2
BS release	0
BS date	1st June 2010
EDI transactions:	
BT ID	DK-BT-001
BT name	Start of supply
BT version	3
BT ID	DK-BT-004
BT name	Master Data for Metering Point
BT version	3
BT ID	DK-BT-002
BT name	End of supply – from MPA

BT version	3
BT ID	DK-BT-007
BT name	Consumption for Metering Site, profiled
BT version	3

2.10 BS-210: Disconnection and reconnection of a Metering Site

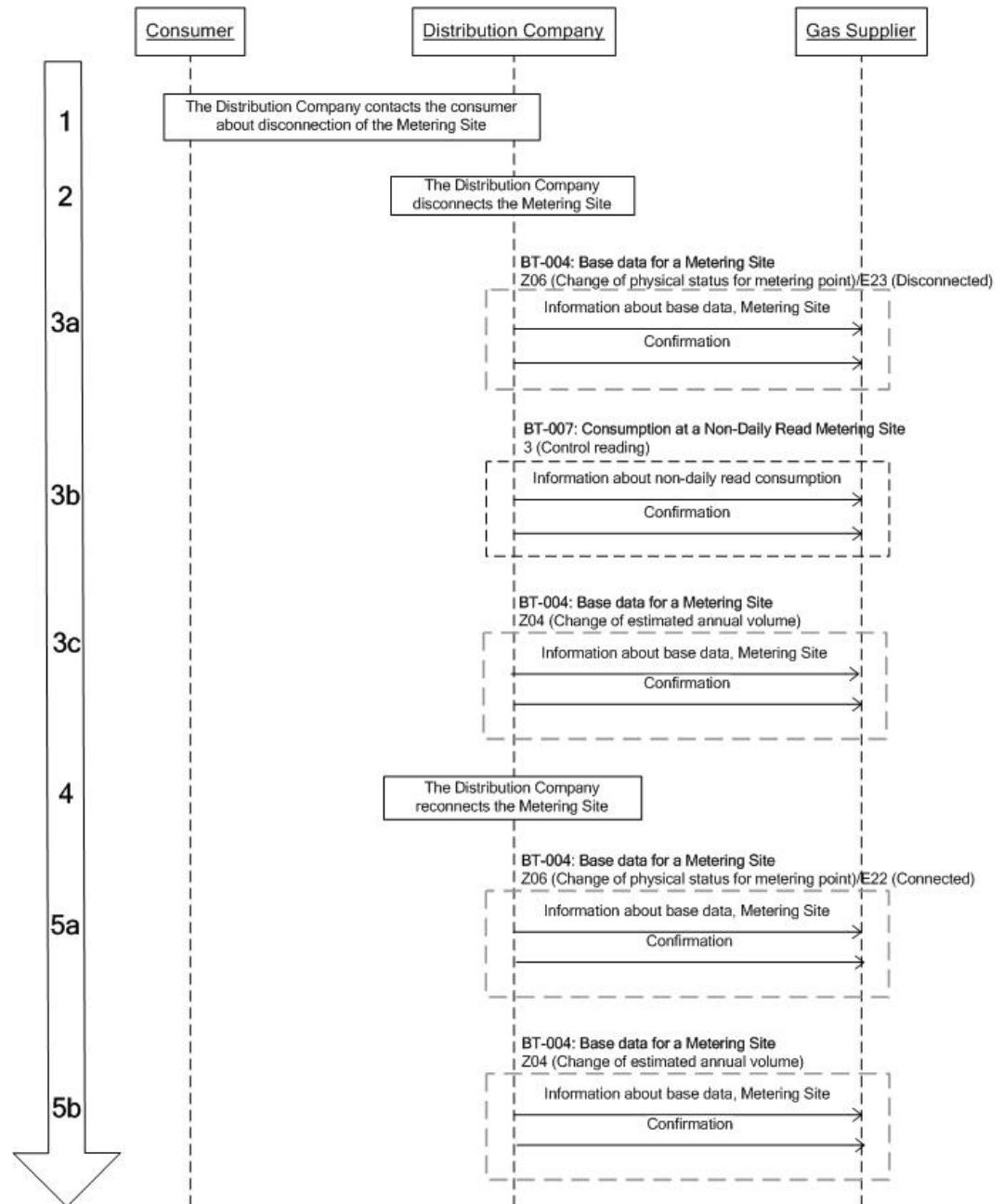


Figure 10: BS-210: Disconnection/reconnection of a Metering Site

2.10.1 General

This scenario applies to the situation in which the Distribution Company disconnects and reconnects a Metering Site.

Note that if a change of supplier has been registered for the Metering Site, the Distribution Company must undertake all the stages of the scenario also in relation to the future Gas Supplier.

The closing down of a Metering Site is not implemented according to this scenario but is treated as a Relocation according to BS-207: Relocation (vacating consumer) notified to the .

This business scenario consists of two transactions:

- Base data for a Metering Site
- Consumption at a Non-Daily Read Metering Site

2.10.2 Start condition for disconnection/reconnection of a Metering Site

The Distribution Company is aware that a given Metering Site is to be disconnected, eg due to non-payment.

2.10.3 Stages in the scenario of disconnection/reconnection of a Metering Site

1. The Distribution Company contacts the consumer regarding disconnection of the Metering Site.
2. The Distribution Company disconnects the Metering Site and can perform a meter reading.
- 3a. The Distribution Company submits a message containing base data to the Gas Supplier stating as cause of transaction Z06 (Change of physical status of Metering Site) and indicating physical status E23 (disconnected).
- 3b. If, in the case of a Non-Daily Read Metering Site, the Distribution Company chooses to make use of a meter reading it has performed, the Distribution Company informs the Gas Supplier of the consumption metered up to the disconnection date stating as cause of transaction 3 (assessment on the basis of non-periodical reading) with a view to final settlement.
- 3c. If, when calculating the Market Share Value of the Gas Supplier, the Distribution Company adjusts the disconnected Metering Site's estimated annual consumption, the Distribution Company submits a message containing base data to the Gas Supplier stating as cause of transaction Z04 and indicating the adjusted estimated annual consumption.

4. The Distribution Company reconnects the Metering Site.
- 5a. The Distribution Company sends a message containing base data to the Gas Supplier stating as cause of transaction Z06 (Change of physical status of Metering Site) and indicating physical status E22 (connected).
- 5b. If, pursuant to item 3c, the Distribution Company has adjusted the estimated annual consumption, it submits a message containing base data to the Gas Supplier stating as cause of transaction Z04 and indicating the adjusted estimated annual consumption.

2.10.4 Deadlines for disconnection/reconnection of a Metering Site

Process	Deadline	Explanation
Submission of base data	Not later than 1 Business Day after change of physical status	Submission of base data to the Gas Supplier stating that the physical status of the Metering Site has been changed.
Submission of consumption data for a Non-Daily Read Metering Site	Not later than 20 Business Days after the Appointed Date	The Distribution Company submits consumption data for a Non-Daily Read Metering Site to the Gas Supplier.

2.10.5 Data content for the scenario of disconnection/reconnection of a Metering Site

The significant data fields involved in the individual data flows are mentioned below. By significant is meant crucial for a professional handling of the business scenario.

Disconnection:

Information about base data, Metering Site - disconnection

- Cause of transaction
 - Z06 Change of physical status of Metering Site
- Metering Site id
- Metering Site address
- Reading method at Metering Site
- Date of reading
- Physical status of Metering Site (E23)
- Validity start date (date of disconnection)
- Start date of supply
- Supplier id (particularly in the case of a future Gas Supplier)
- Estimated annual consumption
- Consumer party name and second consumer party name, if appropriate

Information about non-daily read consumption

- Metering Site id

- Quantity time interval
- Product code
 - 3002: Total consumption in kWh₀
 - 3004: Total consumption in Nm³ (if conversion equipment available)
 - 3006: Total consumption in m³ (if conversion equipment NOT available)
- Quantity (showing up to three decimals)
- Code for reason for reading (3)
- Quantity status
 - 99: Final value, estimated
 - 136: Final value, metered
 - Z01: Value, manually corrected

Information about base data, Metering Site (if annual consumption is zeroed)

- Cause of transaction
 - Z04: Estimated annual consumption adjusted
- Metering Site id
- Metering Site address
- Reading method at Metering Site
- Date of reading
- Physical status of Metering Site
- Validity start date
- Start date of supply
- Supplier id (particularly in the case of a future Gas Supplier)
- Estimated annual consumption (=0)
- Consumer party name and second consumer party name, if appropriate

Reconnection:

Information about base data, Metering Site

- Cause of transaction
 - Z06: Change of physical status of Metering Site
- Metering Site id
- Metering Site address
- Reading method at Metering Site
- Date of reading
- Physical status of Metering Site (E22)
- Validity start date
- Start date of supply
- Supplier id (particularly in the case of a future Gas Supplier)
- Estimated annual consumption
- Consumer party name and second consumer party name, if appropriate

Information about base data, Metering Site (if annual consumption has been zeroed)

- Cause of transaction
 - Z04: Estimated annual consumption adjusted
- Metering Site id
- Metering Site address
- Reading method at Metering Site
- Date of reading
- Physical status of Metering Site

- Validity start date
- Start date of supply
- Supplier id (particularly in the case of a future Gas Supplier)
- Estimated annual consumption
- Consumer party name and second consumer party name, if appropriate

2.10.6 Identification of scenario and transactions

The unambiguous denominations of the business scenario and the transactions involved are given in the chart below.

BS ID	BS-210
BS name	Disconnection/reconnection of a Metering Site
BS version	2
BS release	0
BS date	1st June 2010
EDI transactions:	
BT ID	DK-BT-004
BT name	Base data information for Metering Site
BT version	3
BT ID	DK-BT-007
BT name	Consumption for Metering Site, profiled
BT version	3

2.11 BS-212: Change of meter-reading method

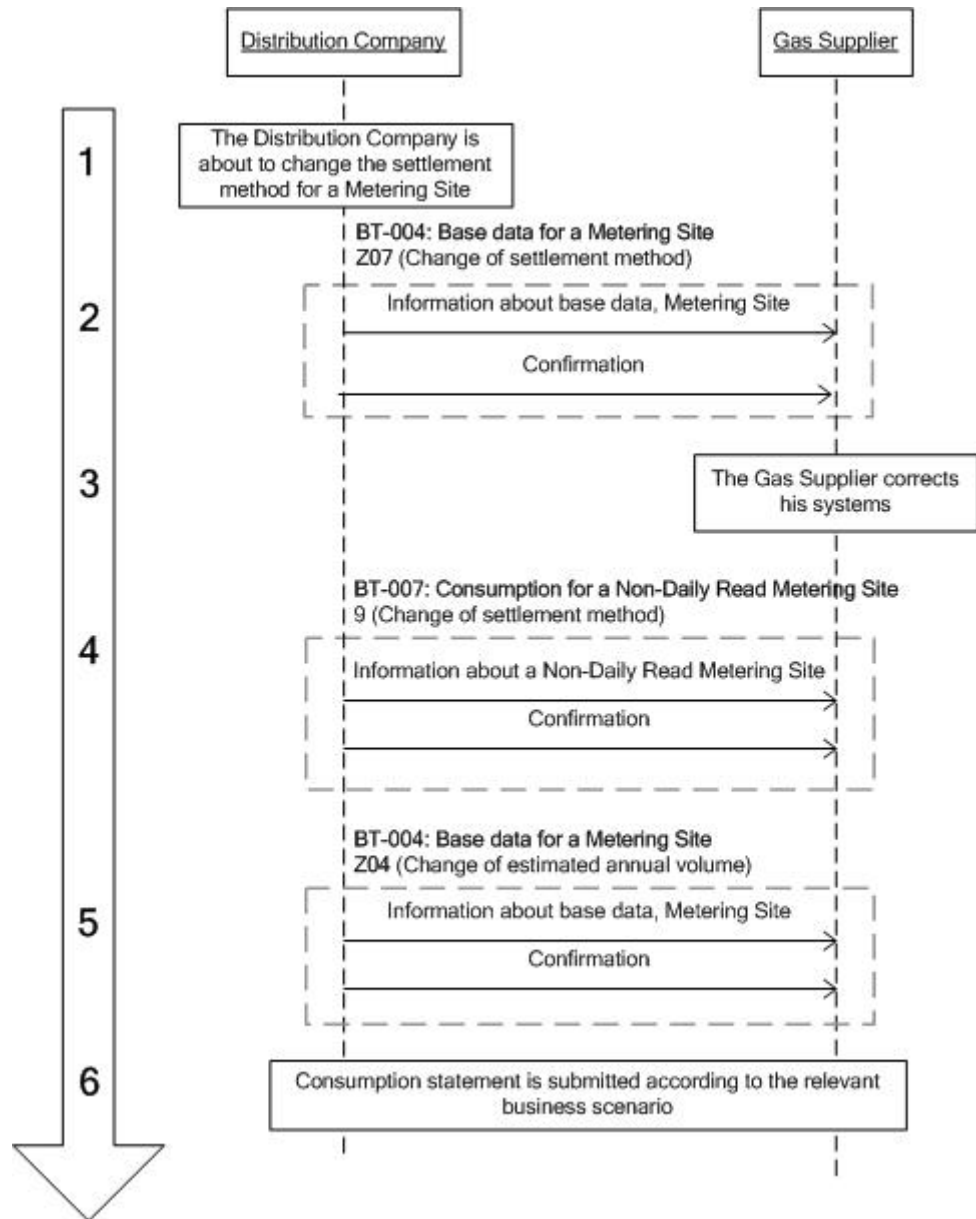


Figure 11: BS-212: Change of meter-reading method

2.11.1 General

The scenario concerns the shift between non-daily and daily reading at a Metering Site. If the meter-reading method is changed, the Gas Supplier must be informed pursuant to this business scenario. The meter-reading method may change for the following reasons:

- Reason 1. Required by the Distribution Company, which changes the obligatory limit for daily reading.
- Reason 2. The consumer's registered annual consumption exceeds/falls short of the obligatory limit for daily reading (eg based on a control reading).

Reason 3. The consumer has requested daily/non-daily reading.

A change due to reasons 2 and 3 must be effected as of the first day of a month giving 2 months' notice and must be communicated to the Gas Supplier via EDI communication pursuant to this business scenario.

This business scenario consists of two transactions:

- Base data for a Metering Site
- Consumption at a Non-Daily Read Metering Site

2.11.2 Start condition for change of meter-reading method

The Distribution Company is about to change the meter-reading method for a Metering Site, and the Gas Supplier must be informed accordingly by EDI communication.

2.11.3 Stages in the scenario of change of meter-reading method

1. The Distribution Company is about to change the meter-reading method:
2. The Distribution Company submits a message containing base data stating as cause of transaction Z07 (change of meter-reading method) and including data corresponding to the new meter-reading method. The validity start date must be the date of the change of meter-reading method.

The message must be sent to the Gas Supplier supplying the Metering Site at the validity start date and to the future Gas Supplier at the Metering Site, if any.

3. The Gas Supplier must make preparations for a change of reading method.
4. In the case of a shift from Non-Daily to Daily Read Metering Site, the consumption up to the time of the change is assessed pursuant to the Distribution Company's rules. The Distribution Company sends the Gas Supplier a final consumption statement with code for cause of transaction '9' (Change of meter-reading method).
5. If, in connection with the change of meter-reading method, the Distribution Company adjusts the estimated annual consumption, it must send a message containing base data stating as cause of transaction Z04 (Estimated annual consumption adjusted) and the code for updating of estimated annual consumption. The validity start date must be the date of change of reading method. The message must be sent to the Gas Supplier supplying the Metering Site on the validity start date and to the future Gas Supplier, if any.

6. If a change has been made to daily reading, the consumption statements after the change must be submitted pursuant to *BS-206 Information about consumption at a Daily Read Metering Site*. In the case of a change to non-daily read metering, future statements must be sent as described in *BS-205 Information about consumption at a Non-Daily Read Metering Site*.

2.11.4 Deadlines for change of meter-reading method

Process	Deadline	Explanation
Submission of base data	Not later than one Business Day after decision to change the reading method	Submission to the Gas Supplier of base data stating a change of meter-reading method.
Submission of consumption data for a Non-Daily Read Metering Site	Not later than 20 Business Days after change of meter-reading method.	The Distribution Company submits consumption data for a Non-Daily Read Metering Site to the Gas Supplier.
Submission of base data (updating)	Not later than one Business Day after updating of base data	The Distribution Company submits updated base data to the Gas Supplier if these data have been changed.

2.11.5 Data content for change of meter-reading method

The significant data fields involved in the individual data flows are mentioned below. By significant is meant crucial for a professional handling of the business scenario.

Information about base data, Metering Site

- Cause of transaction
 - Z07: Change of meter-reading method
- Metering Site id
- Metering Site address
- Reading method at Metering Site
- Date of reading
- Physical status of Metering Site
- Validity start date (date of change of reading method)
- Start date of supply
- Supplier id (particularly in the case of a future Gas Supplier)
- Estimated annual consumption
- Consumer party name and second consumer party name, if appropriate

Information about non-daily read consumption

- Metering Site id
- Quantity time interval (end date = date of change of reading method)
- Product code
 - 3002: Total consumption in kWh₀
 - 3004: Total consumption in Nm³ (if conversion equipment available)

- 3006: Total consumption in m³ (if conversion equipment NOT available)
- Quantity (showing up to three decimals)
- Code for reason for reading (9)
- Quantity status
 - 99: Final value, estimated
 - 136: Final value, metered
 - Z01: Manually corrected value

Information about base data, Metering Site

- Cause of transaction
 - Z04: Estimated annual consumption changed
- Metering Site id
- Metering Site address
- Reading method at Metering Site
- Date of reading
- Physical status of Metering Site
- Validity start date
- Start date of supply
- Supplier id (particularly in the case of a future Gas Supplier)
- Estimated annual consumption
- Consumer party name and second consumer party name, if appropriate

2.11.6 Identification of scenario and transactions

The unambiguous denominations of the business scenario and the transactions involved are given in the chart below.

BS ID	BS-212
BS name	Change of meter-reading method
BS version	2
BS release	0
BS date	1st June 2010
EDI transactions:	
BT ID	DK-BT-004
BT name	Base data information for Metering Site
BT version	3
BT ID	DK-BT-007
BT name	Consumption for Metering Site, profiled
BT version	3

2.12 BS-213: Submission of market share values

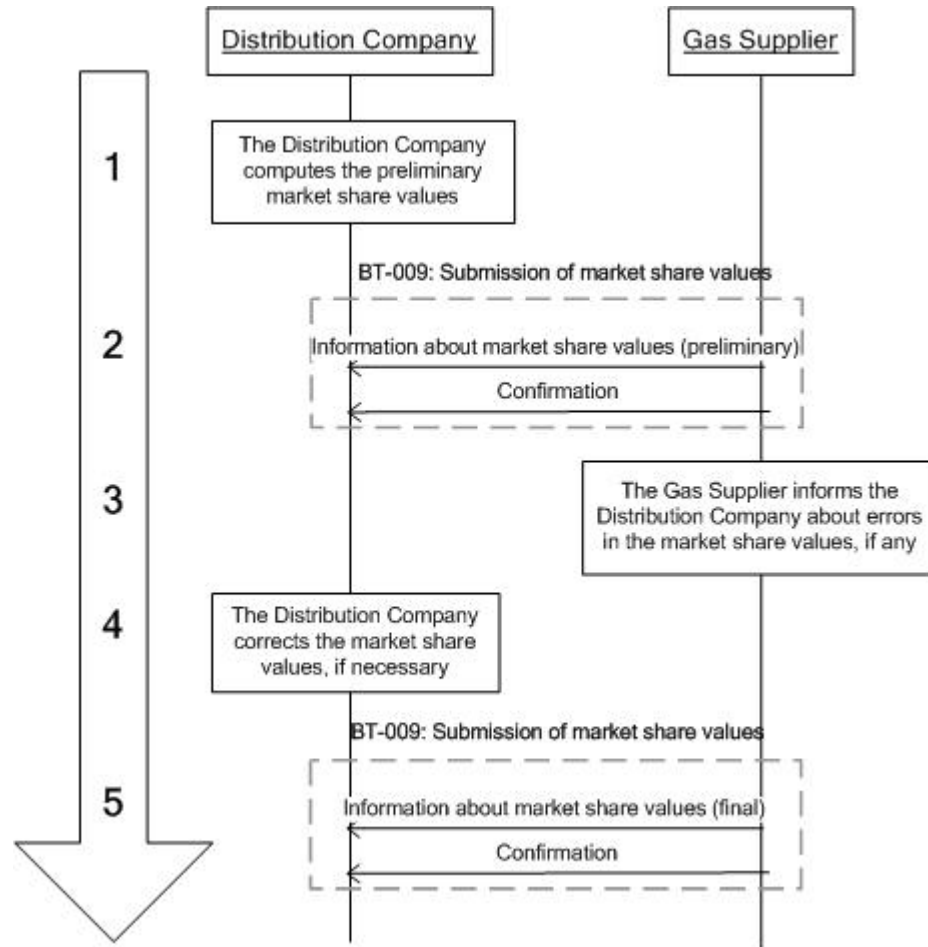


Figure 12: BS-213: Submission of Market Share Values

2.12.1 General

The Distribution Company sends market share values to the Gas Supplier every month. The market share values are made up of the estimated annual consumption of the Gas Supplier's non-daily read consumers and the estimated annual consumption of all non-daily read consumers in the distribution area.

This business scenario consists of one transaction:

- Submission of market share values

2.12.2 Start condition for submission of market share values

The scenario for submission of market share values starts with the Distribution Company calculating and submitting the preliminary market share values to the Gas Supplier, which is done automatically every month. The market share values submitted

form the basis for the distribution of the residual consumption and are part of the reconciliation made 16 months later.

2.12.3 Stages in the scenario of submission of market share values

1. The Distribution Company calculates the preliminary market share values.
2. The Distribution Company sends the preliminary market share values to the Gas Supplier.
3. The Gas Supplier checks that the market share values are correct, reporting back if this is not the case. Such reporting is conducted via other communication, eg e-mail, not later than six Business Days prior to the turn of the month.
4. If the Distribution Company receives an error report from the Gas Supplier, the market share values are evaluated and corrected, if necessary.
5. The Distribution Company submits the final market share values to be used the following month.

2.12.4 Deadlines for submission of market share values

Process	Deadline	Explanation
Submission of preliminary market share values	Not later than 8 Business Days prior to the turn of the month (for the following month).	The Distribution Company sends preliminary market share values to the Gas Supplier.
Submission of final market share values	Not later than 4 Business Days prior to the turn of the month (for the following month).	The Distribution Company sends final market share values to the Gas Supplier.

Table 7. Deadlines for submission of market share values

2.12.5 Data content for submission of market share values

The significant data fields involved in the individual data flows are mentioned below. By significant is meant crucial for a professional handling of the business scenario.

Submission of market share values:

- Message function
 - 9
- Consumer portfolio number (GSRN)
- Time period (one-year intervals)
- Product code

- 3014: Market Share Value of the Gas Supplier in kWh₀ (estimated annual consumption of the Gas Supplier's non-daily read consumers)
- 3013: Market share value of the distribution area in kWh₀ (estimated annual consumption of all non-daily read consumers in the distribution area)
- Quantity given as one value (showing up to three decimals)
- Quantity status
 - 99 Estimated value (preliminary market share values)
 - 31 Estimated annual consumption (final market share values)

2.12.6 Identification of scenario and transactions

BS ID	BS-213
BS name	Submission of market share values
BS version	2
BS release	0
BS date	1st June 2010
EDI transactions:	
BT ID	DK-BT-009
BT name	Reconciliation data transmission
BT version	3

2.13 BS-214: Submission of calorific values

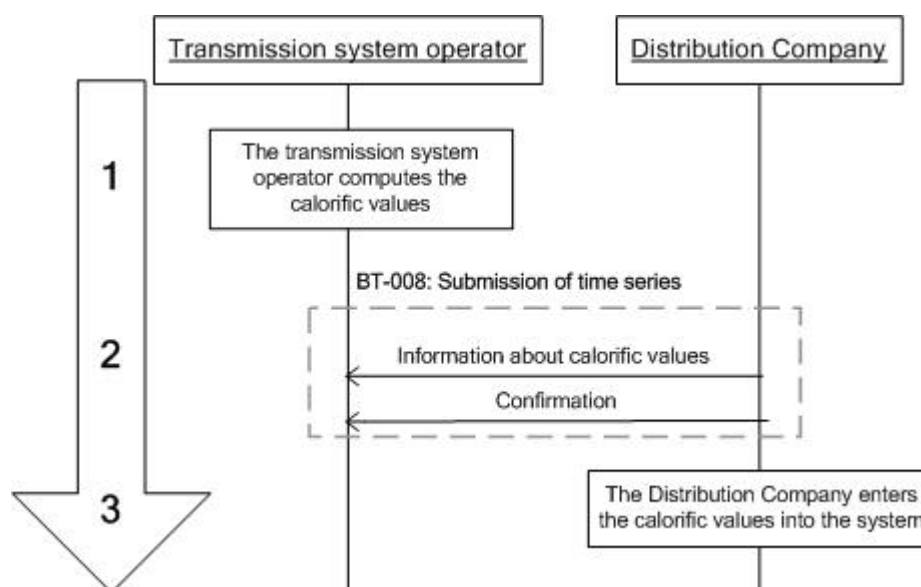


Figure 13: BS-214: Submission of calorific values

2.13.1 General

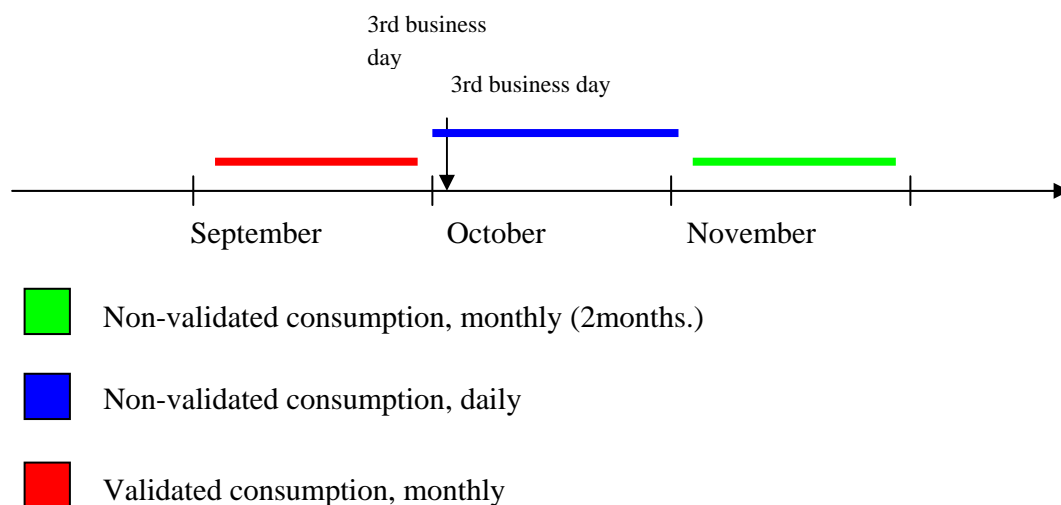
Every month, the transmission system operator assesses the Validated calorific value of the natural gas for each M/R station and submits it in the form of daily values and an average value for all of the past month to the distribution companies. The submission of calorific values takes place not later than on the third Business Day of every month at 16:00.

The transmission system operator assesses the non-validated calorific value of the natural gas every day for each M/R station and submits it in the form of non-validated daily values for the past calendar day to the distribution companies. The submission of daily calorific values takes place no later than 08:00.

The Distribution Companies use the average calorific values as follows:

- In the assessment of the Validated consumption for month x
- In the assessment of the Non-Validated consumption for month $x+2$.

The distribution companies' use of the average calorific values is illustrated in the figure below:



The figure shows that, on the third Business Day of, for instance, the month of October, the transmission system operator submits calorific values. These average calorific values are used to assess the Validated consumption for September and the Non-Validated consumption for November. Furthermore the daily submission of Non-validated consumption is depicted by the blue line, which is an alternative to using the 2 month old GCV for continuous data.

This business scenario consists of one transaction:

- Submission of time series

2.13.2 Start condition for submission of calorific values

At the end of the month, the transmission system operator assesses the Validated calorific value of the natural gas for each M/R station.

At the end of the calendar day, the transmission system operator assesses the Non-validated calorific value of the natural gas for each M/R station.

2.13.3 Stages in the scenario of submission of calorific values

1. The transmission system operator calculates the calorific values.
2. The transmission system operator informs the Distribution Companies of the calorific values.
 - a. The message contains daily values for the preceding day for each relevant M/R station in the distribution area.

- b. The message contains daily values and an average value for the preceding month for each relevant M/R station in the distribution area.
3. The Distribution Company enters the calorific values into the system.
4. The Distribution Company acknowledges receipt.

2.13.4 Correction of the calorific values submitted

If the transmission system operator detects a significant error in the Validated calorific value previously submitted, the transmission system operator contacts the relevant Distribution Company in order to reach a mutual agreement on the correction procedure.

Cancellation of the submitted Validated calorific values must be made manually by telephone.

2.13.5 Deadlines for submission of calorific values

Process	Deadline	Explanation
Submission of calorific values	Not later than at 16:00 on the third Business Day of the following month.	The transmission system operator submits calorific values for the preceding month to the Distribution Company.
Submission of Non-validated calorific values	Not later than at 08:00 on the following day.	The transmission system operator submits daily Non-validated calorific values for the preceding day to the Distribution Company.

Table 8. Deadlines for submission of calorific values

2.13.6 Data content for submission of calorific values

The significant data fields involved in the individual data flows are mentioned below. By significant is meant crucial for a professional handling of the business scenario.

Submission of calorific values

- Message function
 - 9
- M/R station id
- Product code
 - 3007: Calorific daily values in kWh_φ/ Nm³ (Validated daily calorific values for each M/R station)
 - 3008: Calorific monthly values in kWh_φ/ Nm³ (Validated monthly average consumption for each M/R station)

- 3009: Calorific daily values in kWh₀/Nm³ (Non-validated daily calorific values for each M/R station)
- Quantity time period (24-hour intervals and 1-month intervals)
- Quantity (showing up to three decimals)
- Quantity status
 - 136 Metered value

2.13.7 Identification of scenario and transactions

BS ID	BS-214
BS name	Submission of calorific values
BS version	2
BS release	0
BS date	1st June 2010
EDI transactions:	
BT ID	DK-BT-008
BT name	Time series transmission
BT version	3

2.14BS-215: Adjusted residual consumption

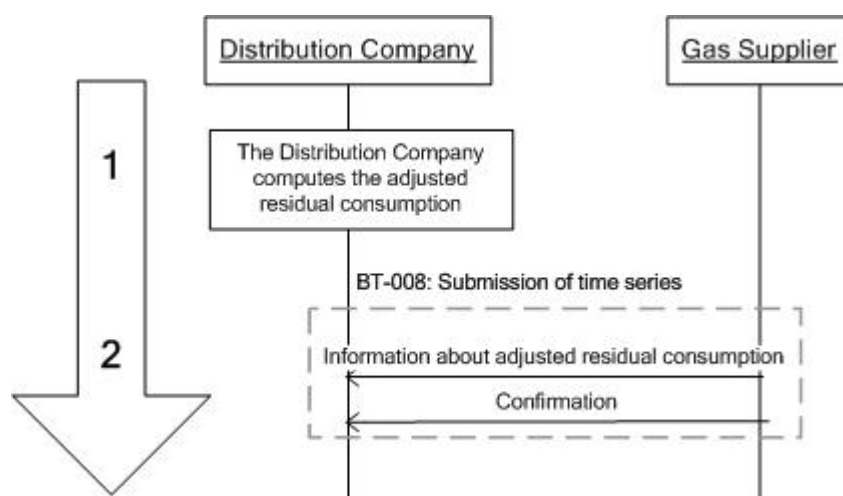


Figure 14: BS-215: Adjusted residual consumption

2.14.1 General

Once a month, the Distribution Company sends the Gas Supplier information about the adjusted residual consumption. The adjusted residual consumption is the difference between a) the total Validated residual consumption in the distribution area for one gas month before the first and second correction statements, and b) the total monthly consumption of all monthly read Metering Sites in the distribution area corresponding to the same gas month. The adjusted residual consumption data is used by the Distribution Company and in some cases by the Gas Supplier as periodisation key in respect of the reconciliation. If there are no annually read metering sites in the distribution area, the adjusted residual consumption must not be submitted.

This business scenario consists of one transaction:

- Submission of time series

2.14.2 Start condition for submission of adjusted residual consumption data

The Distribution Company computes the adjusted residual consumption by deducting the monthly read consumption from the month's total Validated residual consumption.

2.14.3 Stages in the scenario of submission of adjusted residual consumption data

1. The Distribution Company computes the adjusted residual consumption.
2. The Distribution Company sends the adjusted residual consumption data to the Gas Supplier every month.

2.14.4 Deadlines for submission of adjusted residual consumption data

Process	Deadline	Explanation
Submission of adjusted residual consumption data	Not later than the second month after the month of consumption	The Distribution Company sends the Gas Supplier the adjusted residual consumption data.

Table 9. Deadlines for submission of adjusted residual consumption data

2.14.5 Data content for submission of adjusted residual consumption data

The significant data fields involved in the individual data flows are mentioned below. By significant is meant crucial for a professional handling of the business scenario.

Submission of adjusted residual consumption data

- Message function
 - 9
- Distribution area id
- Quantity time period (one-month intervals)
- Product code
 - 1082: Adjusted residual consumption in kWh₀ (adjusted residual consumption in the distribution area in kWh₀)
- Quantity (one value showing up to three decimals)
- Quantity status
 - 136 Metered value

2.14.6 Identification of scenario and transactions

BS ID	BS-215
BS name	Adjusted residual consumption
BS version	2
BS release	0
BS date	1st June 2010
EDI transactions:	
BT ID	DK-BT-008
BT name	Time series transmission
BT version	3

2.15 BS-216: Aggregated gas consumption

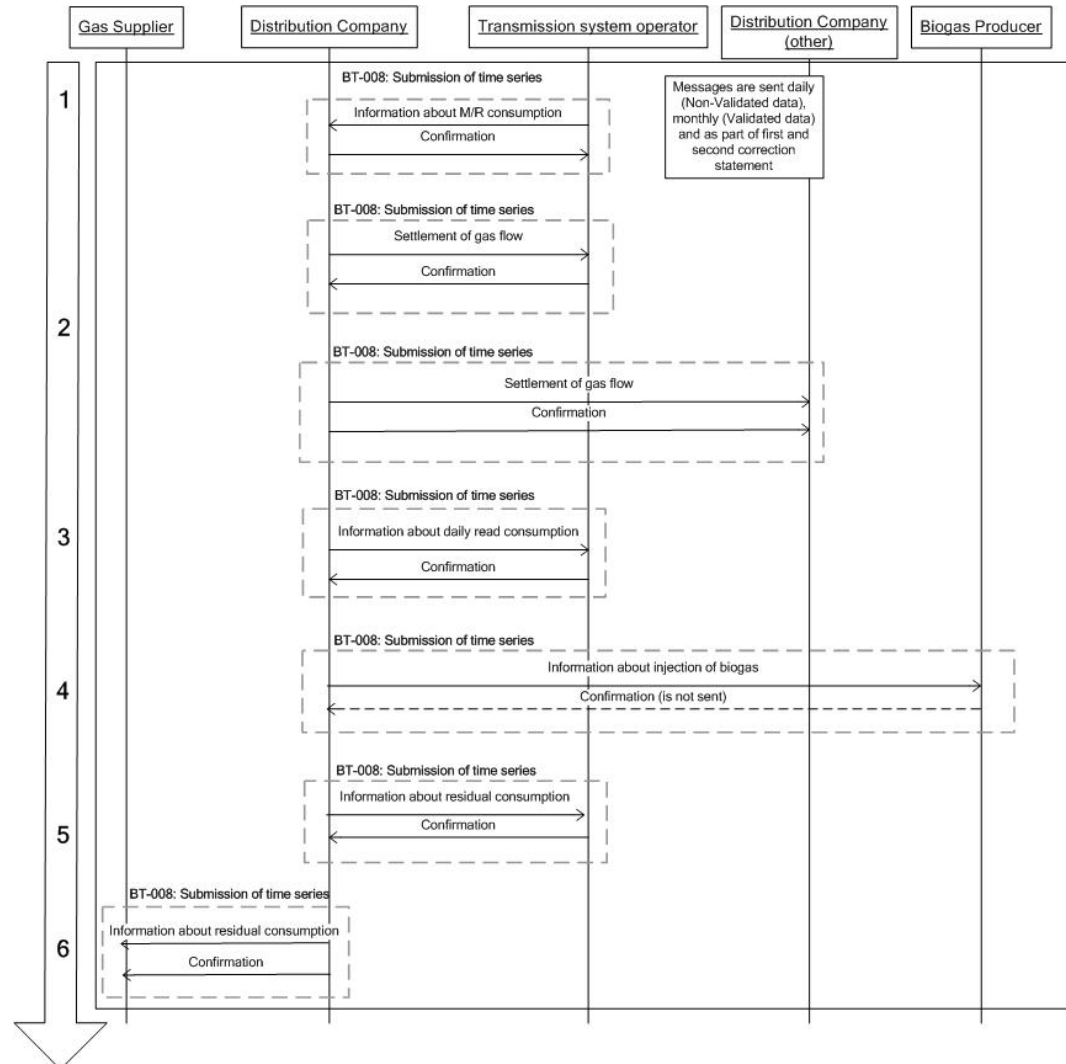


Figure 15: BS-216: Aggregated gas consumption

2.15.1 General

This business scenario concerns the assessments of aggregated gas consumption/production between the Distribution Companies, the Gas Supplier and the transmission system operator.

The messages can be divided into daily data exchange, monthly data exchange and correction statement. The daily data exchange consists of all the Non-Validated data for the preceding gas day whereas the corresponding monthly data exchange consists of Validated data for the preceding month. The first and second correction statement constitute a recalculation of the monthly data exchange.

This means, for instance, that data from January 2006 were sent as a first correction statement in May 2006 and as a second correction statement in April 2007.

This business scenario consists of one transaction:

- Submission of time series

Especially for Bio Natural Gas Producers there are no requirements for submitting confirmations. There are no requirements for replying with APERAK or CONTROL.

2.15.2 Start condition for submission of aggregated gas consumption data

The assessment of aggregated gas consumption is initiated by the transmission system operator metering the injection at each M/R station.

2.15.3 Stages in the scenario of submission of aggregated gas consumption data

1. The transmission system operator informs the Distribution Company of the injection at all M/R stations. The transmission system operator differentiates the messages so that the individual Distribution Companies receive only injection data relating to M/R stations in their own distribution area.

The daily message contains Non-Validated values for the preceding gas day in kWh_g for all M/R stations.

The monthly message contains the total Validated values for the preceding month for all M/R stations. The injection data are submitted as the month's hourly values for each M/R station.

In the first and second correction statement, the consumption (at the individual metering sites) is adjusted, and the monthly consumption values (relating to the consumer portfolios) are recalculated four and 15 months respectively after the month of consumption.

2. The Distribution Company, which acts as transition point administrator, meters and submits consumption values for Metering Sites that meter the data exchange with another area. The message is sent to the transmission system operator and the Distribution Company in the neighbouring area, if relevant.

The daily communication contains Non-Validated values for the relevant Metering Site or M/R station.

The monthly communication contains Validated values for the relevant Metering Site or M/R station.

In the first and second correction statement, the monthly values are recalculated four and 15 months respectively after the month of consumption.

3. The Distribution Company communicates the aggregated, daily read consumption to the transmission system operator.

The daily communication contains the daily read consumption for the preceding gas day. The consumption data is given as a daily aggregated hourly value for each Gas Supplier's portfolio.

The monthly communication contains the total daily read consumption for the preceding month. The consumption data is given as a daily aggregated hourly value for each gas day of the preceding month corresponding to each Gas Supplier's portfolio.

In the first and second correction statement, the monthly values are recalculated four and 15 months respectively after the month of consumption.

4. The Distribution Company responsible for assessing the injected Bio Natural Gas in the distribution area, measures and submits injection values for metering sites which measures the injection of Bio Natural Gas for the BNG Transition Points. The communication is sent to the Transmission System Operator and the Bio Natural Gas Producer.

The daily communication contains the Non-validated injection values for the BNG Transition Point.

The monthly communication contains Validated injection values for the BNG Transition Point.

In the first and second correction statement, the monthly values are recalculated four and 15 months respectively after the month of consumption.

5. The Distribution Company communicates the distributed residual consumption data to the transmission system operator.

The daily communication contains the residual consumption for the preceding gas day given as a daily aggregated value for each Gas Supplier's portfolio.

The monthly communication contains the total residual consumption of the preceding month. The consumption data is given as a daily aggregated value for each day of the preceding month corresponding to each Gas Supplier's portfolio.

In the first and second correction statement, the monthly values are recalculated four and 15 months respectively after the month of consumption.

6. The Distribution Company calculates the total residual consumption in the distribution area and communicates it to all the Gas Suppliers in the distribution area.

The daily communication contains the preceding gas day's total residual consumption in the distribution area.

The monthly communication contains the total residual consumption and is given as a total value for each day of the preceding month.

In the first and second correction statement, the monthly values are recalculated four and 15 months respectively after the month of consumption.

2.15.4 Settlement of gas flow

As it appears from the above scenario stages, the Distribution Company meters the consumption on a daily as well as a monthly basis and as part of the first and second correction statement. The Distribution Company sends the values to the transmission system operator and to the Distribution Company in the neighbouring area and to the Bio Natural Gas Producer, if relevant. This exchange of metered injection values is necessary if the equation: $M/R \text{ injection} = \text{daily read consumption} + \text{non-daily read consumption per distribution area}$ is to be valid.

The gas flow between two neighbouring distribution areas can be either positive or negative. One of the distribution areas own the Metering Site or the M/R station at which the gas flow into the other distribution area is metered. The Metering Site administrator must transmit the metered consumption values in kWh₀ to the Distribution Company in the other area. The message is always sent by the Metering Site administrator to the Distribution Company that has not metered the consumption.

For BNG Transition Points measuring the injection of Bio Natural Gas, the Metering Site administrator must also submit the injection values in kWh₀ to the Transmission System Operator and the Bio Natural Gas Producer.

If the natural gas flow has been in the direction from the Distribution Company acting as Metering Site administrator to the adjacent Distribution Company, the gas volume metered must be given a positive sign in the EDI message. In this case, the adjacent Distribution Company (which is the recipient of the EDI message) must add the gas volume to its total M/R injection, and the Distribution Company acting as Metering Site administrator must deduct the gas volume from its total M/R injection.

If the natural gas flow has been in the direction to the Distribution Company acting as

Metering Site administrator from the adjacent Distribution Company, the gas volume metered must be given a negative sign in the EDI message. In this case, the adjacent Distribution Company (which is the recipient of the EDI message) must deduct the stated gas volume from its total M/R injection, and the Distribution Company acting as Metering Site administrator must add the gas volume to its total M/R injection.

If dealing with injection of Bio Natural Gas, the measured gas flow must be negative within the EDI message. The Distribution Company receiving the gas and measuring it must add the gas volume to its total M/R injection.

A positive and negative gas flow must be indicated by a positive or negative sign respectively. If no sign is given in front of the value, the flow is regarded as positive.

2.15.5 Deadlines for submission of aggregated gas consumption data

Process	Deadline	Explanation
Submission of injection data for M/R stations	Not later than at 08:00 every day.	The transmission system operator sends injection data for M/R stations, daily.
	Not later than at 16:00 on the third Business Day of the following month.	The transmission system operator send injection data for M/R stations, monthly.
	1st correction statement: Not later than at 16:00 on the seventh Business Day of the fourth month following the month of consumption. 2nd correction statement: Not later than at 16:00 on the seventh Business Day of the 15th month following the month of consumption.	The transmission system operator sends consumption data for M/R stations, first and second correction statement.
Settlement of gas flow	Not later than at 08:30 every day.	The Distribution Company sends consumption data for all Metering Sites, daily.
	Not later than at 16:00 on the fourth Business Day of the following month.	The Distribution Company sends consumption data for all Metering Sites, monthly.
	1st correction statement: Not later than at 16:00 on the eighth Business Day of the fourth month following the month of consumption. 2nd correction statement: Not later than at 16:00 on the eighth Business Day of the 15th month following the month of consumption.	The Distribution Company sends consumption data for all Metering Sites, first and second correction statement.

Submission of daily read consumption data (to the transmission system operator)	Not later than at 11:00 every day.	The Distribution Company sends daily read consumption data to the transmission system operator, daily.
	Not later than at 16:00 on the sixth Business Day of the following month.	The Distribution Company sends daily read consumption data to the transmission system operator, monthly.
	1st correction statement: Not later than at 16:00 on the tenth Business Day of the fourth month following the month of consumption. 2nd correction statement: Not later than at 16:00 on the tenth Business Day of the 15th month following the month of consumption.	The Distribution Company sends daily read consumption data, first and second correction statement.
Submission of injection values for Bio Natural Gas (to the transmission system operator and Bio Natural Gas producer)	Not later than at 11:00 every day.	The Distribution Company sends Non-validated injection values for the BNG Transition Point daily.
	Not later than at 16:00 on the sixth Business Day of the following month.	The Distribution Company sends Validated injection values for the BNG Transition Point monthly
	1st correction statement: Not later than at 16:00 on the tenth Business Day of the fourth month following the month of injection. 2nd correction statement: Not later than at 16:00 on the tenth Business Day of the 15th month following the month of injection.	The Distribution Company sends daily read injection data for the BNG Transition Point, first and second correction statement.
Submission of residual consumption data (to the transmission system operator)	Not later than at 11:00 every day.	The Distribution Company sends residual consumption data to the transmission system operator, daily.
	Not later than at 16:00 on the sixth Business Day of the following month.	The Distribution Company sends residual consumption data to the transmission system operator, monthly.
	1st correction statement: Not later than at 16:00 on the tenth Business Day of the fourth month following the month of consumption. 2nd correction statement: Not later than at 16:00 on the tenth Business Day of the 15th month following the month of consumption.	The Distribution Company sends residual consumption data to the transmission system operator, first and second correction statement.

Submission of residual consumption data (to the Gas Suppliers)	Not later than at 11:00 every day.	The Distribution Company sends residual consumption data to the Gas Suppliers, daily.
	Not later than at 16:00 on the sixth Business Day of the following month.	The Distribution Company sends residual consumption data to the Gas Suppliers, monthly.
	1st correction statement: Not later than at 16:00 on the tenth Business Day of the fourth month following the month of consumption. 2nd correction statement: Not later than at 16:00 on the tenth Business Day of the 15th month following the month of consumption.	The Distribution Company sends residual consumption data to the Gas Suppliers, first and second correction statement.

Table 10: Deadlines for submission of aggregated gas consumption

2.15.6 Data content for submission of aggregated gas consumption data

The significant data fields involved in the individual data flows are mentioned below. By significant is meant crucial for a professional handling of the business scenario.

Submission of injection data for M/R stations:

- Message function
 - 9
- M/R station id
- Quantity time period (one-hour intervals). The daily message contains 1x24 hourly values, and the monthly message contains 30x24 hourly values.
- Product code:
 - 3030/3031/3032/3033: Injection for each M/R station in kWh₀ (Non-Validated consumption/Validated consumption/first correction/second correction)
- Quantity (showing up to three decimals)
- Quantity status
 - 136 Metered value

Settlement of gas flow (with a positive or negative sign)

- Message function
 - 9
- Metering Site id or M/R station id

- Quantity time period (one-hour intervals). The daily message contains 1x24 hourly values, and the monthly message contains 30x24 hourly values.
- Product code:
 - 3060/3061/3062/3063: Injection for each Metering Site or M/R station in kWh_φ (Non-Validated consumption/Validated consumption/first correction/second correction)
- Quantity (showing up to three decimals)
- Quantity status
 - 136 Metered value

Submission of daily read consumption data

- Message function
 - 9
- Consumer portfolio number (GSRN)
- Quantity time period (one-hour intervals). The daily message contains 1x24 aggregated hourly values, and the monthly message contains 30x24 aggregated hourly values.
- Product code:
 - 3040/3041/3042/3043: Daily read consumption for each Gas Supplier's portfolio (aggregated) in kWh_φ (Non-Validated consumption/Validated consumption/first correction/second correction)
- Quantity (showing up to three decimals)
- Quantity status
 - 136 Metered value

Injection of Bio Natural Gas (with negative sign)

- Message function
 - 9
- BNG Transition Point ID (GLN)
- Quantity time period (one-hour intervals). The daily message contains 1x24 aggregated hourly values, and the monthly message contains 30x24 aggregated hourly values.
- Product code:
 - 3060/3061/3062/3063: Injection for each BNG Transition Point in kWh_φ (Non-Validated consumption/Validated consumption/first correction/second correction)
- Quantity (showing up to three decimals)
- Quantity status
 - 136 Metered value

Submission of residual consumption data (to the transmission system operator)

- Message function
 - 9

- Consumer portfolio number (GSRN)
- Quantity time period (24-hour intervals). The daily message contains 1x1 daily values, and the monthly message contains 30x1 daily values.
- Product code:
 - 3050/3051/3052/3053: Distributed residual consumption in kWh₀ (residual consumption (aggregated) for each Gas Supplier) (Non-Validated consumption/Validated consumption/first correction/second correction)
- Quantity (showing up to three decimals).
- Quantity status
 - 136 Metered value

Submission of residual consumption data (to the Gas Suppliers)

- Message function
 - 9
- Distribution-area id
- Quantity time period (24-hour intervals). The daily message contains 1x1 daily values, and the monthly message contains 30x1 daily values.
- Product code
 - 3020/3021/3022/3023: Residual consumption in kWh₀ (total for the distribution area) (Non-Validated consumption/Validated consumption/first correction/second correction)
- Quantity (showing up to three decimals).
- Quantity status
 - 136 Metered value

2.15.7 Identification of scenario and transactions

BS ID	BS-216
BS name	Aggregated gas consumption
BS version	2
BS release	0
BS date	1st June 2010
EDI transactions:	
BT ID	DK-BT-008
BT name	Time series transmission
BT version	3

2.16 BS-217: Reconciliation statement

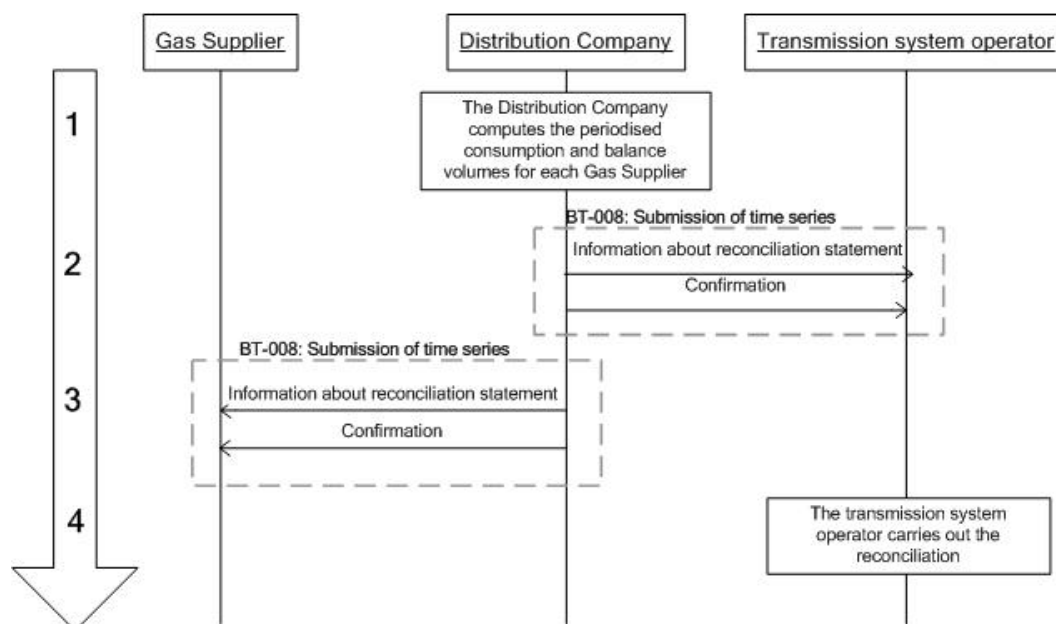


Figure 16: BS-217: Reconciliation statement

2.16.1 General

Once every month, the Distribution Company submits a reconciliation statement to the transmission system operator and the Gas Suppliers. The reconciliation statement is based on the consumption metered 15 months earlier.

This business scenario consists of one transaction:

- Submission of time series

2.16.2 Start condition for submission of reconciliation statement

Immediately after preparing the second correction statement, the Distribution Company computes the periodised consumption and balance volumes (difference between the second correction statement and the periodised consumption) for each Gas Supplier.

2.16.3 Stages in the scenario of submission of reconciliation statement

1. The Distribution Company prepares a statement of the periodised consumption and the balance volumes for each Gas Supplier based on the consumption metered 15 months earlier.

2. The Distribution Company submits a reconciliation statement for each Gas Supplier to the transmission system operator based on the consumption metered 15 months earlier.
3. The Distribution Company sends each Gas Supplier a reconciliation statement based on the consumption metered 15 months earlier.
4. The transmission system operator carries out the reconciliation.

2.16.4 Deadlines for submission of reconciliation statements

Proces	Tidsfrist	Forklaring af proces
Submission of reconciliation statement to the transmission system operator.	Not later than the 12 th Business Day (immediately after the 2nd correction statement) of the 15th month after the month of consumption.	The Distribution Company submits a reconciliation statement to the transmission system operator.
Submission of reconciliation statement to the Gas Supplier.	Not later than the 12 th Business Day (immediately after the 2nd correction statement) of the 15th month after the month of consumption.	The Distribution Company submits a reconciliation statement to the Gas Supplier.

Table 11: Deadlines for submission of reconciliation statements

2.16.5 Data content for submission of reconciliation statements

The significant data fields involved in the individual data flows are mentioned below. By significant is meant crucial for the handling of the business scenario.

Reconciliation statement (to the transmission system operator)

- Message function
 - 9
- Consumer portfolio number (GSRN)
- Quantity time period (one-month intervals)
- Product code
 - 3011: Reconciliation in kWh_o (balance volume in relation to residual consumption for each Gas Supplier). One value with a positive or a negative sign.
 - 3012: Periodised consumption in kWh_o (Periodised residual consumption for each Gas Supplier). One value.
- Quantity (showing up to three decimals)

- Quantity status
 - 136 Metered value

Reconciliation statement (to the Gas Supplier)

- Message function
 - 9
- Consumer portfolio number (GSRN)
- Time period (one-month intervals)
- Product code
 - 3011: Reconciliation in kWh₀ (balance volume in relation to residual consumption). One value with a positive or a negative sign.
 - 3012: Periodised consumption in kWh₀ (periodised residual consumption). One value.
 - 3053: Distributed residual consumption in kWh₀ (second correction)
- Quantity (showing up to three decimals)
- Quantity status
 - 136 Metered value

2.16.6 Identification of scenario and transactions

BS ID	BS-217
BS name	Reconciliation statement
BS version	2
BS release	0
BS date	1st June 2010
EDI transactions:	
BT ID	DK-BT-008
BT name	Time series transmission
BT version	3

3 Error handling

The section on EDI communication (in Regulation F) describes in detail how the parties must act in the event of errors in the EDI data exchange. Only the three most important principles are mentioned below:

1. The party (A) that has started the data exchange sending the first EDI message to a recipient (B) is responsible for checking that a response is received within the deadline. If this is not so, and A is sure that B has the correct communication setup, A must contact B in order to clarify the error.
2. If A receives a negative response, the error must be corrected on the basis of the error report and a new message be submitted. If this is not possible, A must contact B in order to clarify the problem.
3. If B sends a positive response but A's IT system detects an error in the response so that an error message is sent to B, B must contact A in order to clarify the error. In this type of situation, B's systems must not automatically cancel the transaction.

4 Fallback procedures

All Distribution Companies on the Danish natural gas market must be able to submit notifications of change of supplier electronically. For situations in which this is not possible due to IT system breakdown, a fallback procedure has been elaborated into a form on paper, which can be faxed or exchanged by ordinary post between the players. In this way, a situation is avoided in which a Gas Supplier loses consumers because he is unable to submit the notification of change of supplier to the Distribution Company in time.

If an IT system used for change of supplier breaks down, the Distribution Company must evaluate whether it is necessary to use fallback procedures.

If a Gas Supplier does not get a response to an electronic message, he must check the status of the Distribution Company's system. If the status is offline, and the deadline for notification is about to expire, the Gas Supplier must submit the notification of change of supplier using the fallback procedure.

The Distribution Company may arrange with Gas Suppliers that have used the fallback procedures to resubmit the notifications when the Distribution Company's systems are online again.

The table below shows whether there is an fallback procedure for a given business scenario:

Business scenario	Fall back procedure
BS-201: Change of Supplier at Normal Notice	Yes
BS-202: End of supply	Yes
BS-203: Submission of base data	No
BS-204: Change of Supplier at Short Notice	Yes
BS-205: Consumption statement for a Non-Daily Read Metering Site	No
BS-206: Consumption statement for a Daily Read Metering Site	Yes
BS-207: Relocation (vacating consumer) notified to the Distribution Company	Yes
BS-208: Relocation (incoming consumer) notified to the Distribution Company	Yes
BS-209: Relocation (incoming consumer) notified to the Gas Supplier	Yes
BS-210: Disconnection and reconnection of a Metering Site	Yes
BS-212: Change of meter-reading method	Yes

Note that some fallback procedures are based on a form intended for change of supplier. A copy of the form for Change of Gas Supplier is shown in section 4.1.

All the fallback procedures are based on submission of information by e-mail, post or telefax. The appropriate addresses all appear from the common register of players.

BS-201, BS-202 and BS-204

The Gas Supplier's notification is delivered by e-mail, post or telefax. The Distribution Company returns a copy of the form indicating approval or rejection.

BS-207, BS-208, BS-210 and BS-212

The Distribution Company notifies by e-mail, post or telefax. The recipient must acknowledge receipt replying to the return address.

BS-209

The Gas Supplier notifies by e-mail, post or telefax. The Distribution Company replies indicating approval or rejection.

BS-206 and BS-213-BS-217

Reference is made to the fallback report giving detailed information about the fallback procedures applying to these business scenarios.

The deadlines for each of the fallback procedures are indicated in Appendix 1.

4.1 Form for the change of Gas Supplier

This notification of conclusion/termination of agreement on the supply of the Metering Site mentioned below is given pursuant to Rules for Gas Distribution. The use of the form involves payment of a fee unless otherwise indicated.

To:

--

Distribution Company's name and address

From:

--

Gas Supplier's name, address and fax no., if appropriate

Appointed Date	Change	Change now	End	Gas Supplier's GSRN number	
Name, address and e-mail address of Gas Supplier's contact person					
Date and signature			Date and time of receipt		
Metering Site id			Approved		Rejected
Street address and postal code for Metering Site			Comment		
Metering Site id			Approved		Rejected
Street address and postal code for Metering Site			Comment		
Metering Site id			Approved		Rejected
Street address and postal code for Metering Site			Comment		
Metering Site id			Approved		Rejected
Street address and postal code for Metering Site			Comment		
Metering Site id			Approved		Rejected
Street address and postal code for Metering Site			Comment		
Metering Site id			Approved		Rejected
Street address and postal code for Metering Site			Comment		
Metering Site id			Approved		Rejected
Street address and postal code for Metering Site			Comment		
Date			Distribution Company's signature		
By way of receipt, the Distribution Company returns the completed form not later than five workdays after receipt.					

Devoteam Fischer & Lorenz - Dato: 24-03-2003

4.2 Instructions

The form is to be completed by the Gas Supplier and sent by letter to the Distribution Company servicing the Metering Sites involved. A form is to be completed for each Appointed Date, and it must be indicated by ticking the appropriate box whether the notification concerns a normal change of supplier in connection with the signing of an agreement, an immediate change of supplier (at short notice) or end of supply. The Gas Supplier is not allowed to fill in the grey fields.

The deadlines for notification are:

Change of supplier:

- The form must be received by the Distribution Company not later than one month + 2 Business Days prior to the Appointed Date
- The form must not be submitted earlier than two months before the Appointed Date
- The Distribution Company must confirm the change of supplier within five work-days

End of supply:

- The form must be received by the Distribution Company on the third to the fifth workday of the last month of supply
- The Distribution Company must confirm the end of supply within five workdays

Once the Distribution Company has received the form, the intention is that it be used as typing basis in relation to change of supplier or end of supply. The result of each Metering Site is written on to the form direct. If a change of supplier or end of supply is not approved, the reason for the rejection must be indicated in the box marked "Comment".

The Distribution Company returns a signed copy of the form as confirmation not later than on the fifth workday after receipt of the form. This should be done by telefax if the Gas Supplier has indicated a fax number. If not, the confirmation is sent by letter, and the Distribution Company is not responsible with regard to the postal delivery time.

The Gas Supplier may create his own layout for the form provided that it contains the same fields arranged in the same order. The Gas Supplier may find it relevant to have his own layout if the form is printed by his own IT system. A layout resulting in a form of more than one page is acceptable as long as each page contains the number of the page and the total number of pages.

5 Approval of EDI systems

To participate in the EDI communication, it is necessary that the IT systems of the individual players are approved for error-free exchange of the EDI messages mentioned in this guide.

In connection with the implementation, the elements of the approval process will be laid down in detail, including a specification of how the various system levels (e-mail systems, EDI modules, customer and metering applications and business scenarios) are to be tested.